

Leading with strength in the face of uncertainty.

Discover how breakthrough cancer research
continues to help patients like Kara.



Cancer is being conquered at The Princess Margaret because of donors like you.

One in two Canadians will be diagnosed with cancer in their lifetime. By the time the day is through, another **228** Canadians will die of cancer.

With stats like this, the end of cancer might seem very far away. But not to us.

Canadians have a greater chance of surviving than ever before — the survival rate has jumped from 25% to **63%** since the 1940s.

This progress is thanks to the dedicated cancer researchers and clinicians who continue to push the boundaries of knowledge, and because of generous donors like you.

In 2021, with the support of our passionate community, we granted **\$113 million** to The Princess Margaret — more funds than ever before to fuel world-leading cancer care and research.

Princess Margaret Cancer Centre is transforming what it means to live with cancer — but these breakthroughs only happen with the support of donors like you.

The Princess Margaret at UHN is:



Canada’s leading comprehensive cancer centre, fuelled by the country’s largest cancer charity.



Treating more than **200 types of cancer**, including many of Canada’s most complex and rare cases.



Treating 19% of our patients in trailblazing clinical trials – almost double the national average of the US or the UK.



Home to **300 of the world’s leading cancer researchers**.



Partnering with more than **500 leading cancer institutes in 107 countries** to advance breakthrough cancer research, education, and care on a global scale.

Contents

2021 Annual Report

Message From Our Leaders 3

A Healthier World 4

Message From Dr. Stewart 4

Profiles of Progress 5

The Princess Margaret Grand Challenges 6

Donor Story: Agnico Eagle 7

Space Transformation 8

Donor Story: The Myhal Family 8

Donor Story: The Longo Family 9

Invest in Research 10

Till & McCulloch Society 11

Our Events 12

Thank You to Our Colleagues 13

Awards Recognition 13

Donor Story: Suzanne and Jim Ramsay 14

Board of Directors 15

UHN Board of Trustees 16

Chairs 16

Financial Summaries 17

Patient Story: Kara Thornhill 18

Board Committees 19

Our Donors 20

JCB Grant Society 26

Special Events 26

Expendable Funds List 27

Endowed Funds List 28

A message from our leaders.

“

We're committed to transforming the cancer experience and to making a dramatic improvement in cancer outcomes. But it is going to take all of us.”

The COVID-19 pandemic changed many things: the way we work, the way we live, the way we fundraise. One thing that didn't change: the steadfast commitment of our supporters. Thanks to you, we were able to continue to build upon our commitment to conquering cancer.

In a year of unprecedented challenges, the overwhelming support of our donors allowed us to continue to achieve world-class impact, delivering more funds than ever before to continue life-saving cancer research and patient care. We completed the first phase of the Cancer



Janice Fukakusa,
*Board Chair, The Princess
Margaret Cancer Foundation*



Centre's Space Transformation. We celebrated several cornerstone gifts to the project, including Richard Rooney & Laura Dinner's \$5 million gift to support the new Patient Education Theatre, and a \$5 million gift from the Myhal Family Foundation to support the new Blood Collection/ECG Lab on the first floor. The Longo's Family Charitable Foundation stepped forward with an outstanding gift of \$2.5 million to support our Space Transformation project and Tumour Immunotherapy Program.

We also found innovative ways for our events to overcome the challenges of lockdown. Within months of the new government restrictions, our team worked swiftly to transition some of the country's largest peer-to-peer events into virtual experiences. We even added new ways for supporters to engage with The Princess Margaret with the "almost anything goes" fundraiser, the DIY Challenge, and entered the e-gaming space with Quest to Conquer Cancer, inspiring support from an entire new community of supporters including 99% first-time donors with

77% from outside of Canada. Finally, our Princess Margaret Home Lottery achieved record-setting results, delivering \$49.3 million of net revenue to fund cancer research.

This past year required more strength, tenacity, and resilience than ever before. The enduring commitment of the Cancer Centre staff to patients was nothing short of remarkable. The support from our donors and community was beyond extraordinary. Together, we stood strong in the face of adversity and granted \$113 million to the Cancer Centre to accelerate cancer research and care – a new record!

Thank you to our donors, volunteers, and community members for your endless passion, commitment, and generosity.


Together, we will **Conquer Cancer in Our Lifetime.**

A hello from our new President and CEO.

I am honoured to join the team at The Princess Margaret Cancer Foundation in support of Princess Margaret Cancer Centre at UHN, where I worked over 20 years ago. Like so many Canadians, I have seen the toll that cancer can take on individuals and families, including my own, and I believe that the Foundation will have exponential impact in the years ahead in creating A Healthier World. The time to act has never been more urgent, due to the anticipated wave of cancer cases caused by delayed screenings during the pandemic. I am excited to return to the UHN family and work with this world class team of clinicians, scientists, staff, patients, and our volunteers and donors to Conquer Cancer in Our Lifetime.

Dr. Miyo Yamashita, *President & CEO, The Princess Margaret Cancer Foundation*

A Healthier World for cancer patients.

A photograph of two men in dark blue suits and patterned ties standing in front of a light-colored stone wall. The man on the left is balding with a friendly expression, and the man on the right has dark hair and is also smiling. They are standing on a paved surface next to a set of stone steps.

The UHN Vision to deliver A Healthier World means that we are deeply committed to providing just that for cancer patients. Despite decreases in cancer death rates in high-resource countries, the number of cancer cases and deaths is projected to more than double worldwide over the next 20-40 years. By 2030, there will be approximately 26 million new cancer cases and 17 million cancer deaths per year globally, with cancer overtaking heart disease as the leading cause of death. Delivering Cancer Care 2030 is a top UHN priority.

Fortunately, the complexity of cases handled at The Princess Margaret and across the University Health Network make us a national and international leader in discovery, education, and care in cancer. In fact, we have the largest hospital-based research program in Canada at UHN, with major research in oncology, as well as cardiology, transplantation, neurosciences, surgical innovation, infectious diseases, genomic medicine, and rehabilitation medicine. Patients at The Princess Margaret benefit from this multi-disciplinary approach, as multiple health teams from across UHN come together to care for our patients' complex needs.

Our deep commitment to transforming lives through excellence in cancer care never wavered throughout the pandemic, thanks to the exceptional work of TeamUHN. As we move forward with the guidance of the Board of Trustees, The Princess Margaret Cancer Foundation Board, and our new President and CEO of the Foundation — as well as the passionate community of donors who support The Princess Margaret — we know we will successfully address both the urgent and emergent needs of patients with cancer and truly deliver A Healthier World.

Right: **Dr. Kevin Smith,**
President and CEO, University Health Network

Left: **Brian Porter,**
Chair of the UHN Board of Trustees
President & CEO, Scotiabank

Delivering world class results in an unprecedented time.



The ongoing pandemic has presented unprecedented challenges to the global cancer community, transforming how we deliver healthcare and conduct science, and how we connect with each other. Still, the continuing growth in new cancer cases has remained constant. For this reason, we cannot waver in our determination to advance treatment by understanding cancer at the most detailed level, and by accelerating discovery and innovation.

With 163 new clinical research studies last year and \$254 million in research funding, Princess Margaret Cancer Centre is the only comprehensive cancer centre in Canada and one of the world's best. Reflecting on the past year, our major highlights include setting up a new biotechnology company, launching The Princess Margaret Global Cancer Program to address the growing disparities in cancer treatment in Canada, and around the world, and accelerating discoveries in blood stem cells that give us clues about how cancers maintain stem-like properties that may later be re-activated and contribute to cancer reoccurring. Finally, we completed major renovations of the main floor of the Cancer Centre as well as the Gynecology and Palliative Care Clinics to create a more inviting environment.

I would like to acknowledge the thousands of dedicated supporters who help make our programs, research, and bold innovation agenda possible. We continue to give comfort and confidence to our patients and their families in one of the most challenging times of this century, and we will not stop our pursuit of transformative cancer care. I look forward to working with the new President and CEO of The Princess Margaret Cancer Foundation and all of TeamUHN.

Dr. A. Keith Stewart, MB.ChB, MBA, FRCPC,
Director, Princess Margaret Cancer Centre
VP Cancer, University Health Network

Breaking new ground at The Princess Margaret.



Cancer did not stop because of COVID-19 and neither did we. Despite the challenges of the pandemic, scientists at The Princess Margaret persevered and made exceptional breakthroughs that will transform what it means to live with cancer. Thanks to donors like you, our scientists are making headway in key areas of cancer research, including enabling earlier diagnoses and developing new precision therapies that will treat cancers with greater efficacy and less harmful side effects.

Here are four examples of the remarkable progress made this year at The Princess Margaret.

Building an internationally recognized research program in cancer epigenetics.

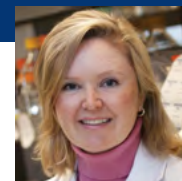
Dr. Housheng Hansen He is an experimental and computational biologist at Princess Margaret Cancer Centre, whose research focuses on cancer epigenetics and noncoding RNAs — a vital class of genetic code that used to be considered irrelevant “junk.”



Recently, he teamed up with nanotechnology expert Dr. Gang Zheng, a Senior Scientist and Associate Research Director, to develop RNA therapy, building upon a new technology that was used to develop the Moderna and Pfizer COVID vaccines. Dr. He has also translated his research findings into treatments, including an ongoing Phase II clinical trial to determine if a pathological subtype with a noncoding RNA is a biomarker for intensified treatment in certain prostate cancer patients. He also contributed to two patents, one for a new RNA detection method and another for a new approach to make immunotherapy more effective.

Overcoming drug resistance in “hibernating” cancer cells.

In a first of its kind study, Princess Margaret Cancer Centre scientist Dr. Catherine O’Brien and her team discovered that all cancer cells can enter a sluggish, slow-dividing state to survive the harsh environment created by chemotherapy or other targeted treatments. In the same study, the researchers show that novel therapeutic strategies specifically targeting cancer cells in this slow-dividing state can prevent cancer regrowth.



“There are examples of animals entering into a reversible and slow-dividing state to withstand harsh environments,” says Dr. O’Brien. “It appears that cancer cells have craftily co-opted this same state for their survival.”

“This gives us a unique therapeutic opportunity,” Dr. O’Brien continues. “We need to target cancer cells while they are in this slow-cycling, vulnerable state before they acquire the genetic mutations that drive drug-resistance. It is a new way to think about resistance to chemotherapy and how to overcome it.”

First in Canada: High-precision treatment for pancreatic cancer with the MR-Linac.

In February 2021, The Princess Margaret became the first centre in Canada to complete treatment for a patient with pancreatic cancer on the magnetic resonance imaging guided linear accelerator — also known as MR-LINAC.

This state-of-the-art radiation treatment combines a magnetic resonance imaging (MRI) scanner with a linear accelerator to guide radiation delivery in real-time. That means our clinicians can watch live as the beam of radiation enters the body and can guide the beam to precisely target the tumour, lessening damage to healthy surrounding tissue.

This innovative technology allows for high-precision treatment, enabling physicians to observe a tumour’s size, movement, and perimeter with greater clarity and adjust radiation delivery accordingly while a patient is being treated.

We congratulate the large interdisciplinary team of over 50 clinicians and researchers for this milestone achievement in Canadian medicine.

Princess Margaret researchers launch start-up aimed at detecting cancer with blood sample.

A simple blood test for cancer could be on the horizon with Adela, a start-up company launched out of UHN poised to advance precision-based, personalized medicine.



Based on the cutting-edge research of Drs. Daniel De Carvalho and Scott Bratman, both Senior Scientists at Princess Margaret Cancer Centre, Adela envisions a future where multiple cancers and other diseases could be detected by taking a simple blood sample. With UHN’s unique technology de-risking approach and with support from the donor-supported Princess Margaret Cancer Centre Innovation Acceleration Fund, Adela gained the confidence of five major investor partners and has attracted seasoned entrepreneurs to their leadership team. Together, they will further advance the innovative liquid biopsy technology for cancer detection and management first discovered at UHN.

Learn more about innovations like these at www.thepmcf.ca/latest-news.

Transforming the patient experience.

Innovation continues with
The Princess Margaret Grand Challenges.



The Princess Margaret is ready to transform how people experience cancer. It's time to supercharge the progress being made and move into a new era of cancer treatment where everything is earlier, better, and simpler.

As part of these efforts, the Cancer Centre launched The Princess Margaret Grand Challenges in 2020 — made possible by contributions from our donors. This work is crucial as we focus our interconnected research to detect the disease earlier and treat it with less-toxic therapies, moving beyond chemotherapy while optimizing our digital assets and data to accelerate innovations in high-definition therapeutics. The competition includes a grant of \$500,000, which allows winners to pursue their bold projects that will move us closer to completely transforming the patient experience.

—Dr. A. Keith Stewart, MB.ChB, MBA, FRCPC,
Director, Princess Margaret Cancer Centre
VP Cancer, University Health Network

Intercept Cancer Winner:

Dr. Natasha Leighl



This category focuses on detecting cancer before symptoms appear and intercepting it while it's still curable. Dr. Leighl was awarded for her work in advancing the early detection of lung cancers, one of the deadliest cancers in the world. Her work harnesses liquid biopsy to predict those at higher risk of recurrence, leading to increased cure rates and minimizing harsh side effects for those at a lower risk.

Beyond Chemotherapy Winner:

Dr. Adrian Sacher



This category supports thinking that goes beyond chemotherapy towards more personalized and effective treatments without the harsh side effects. Dr. Sacher and his co-investigators are working to determine when patients are responding well to immunotherapy at earlier stages and can avoid chemotherapy altogether.

Digital Intelligence Winners:

Drs. Aisling Barry and Philip Wong



Reimagining the cancer patient experience is an essential part of innovating new treatments, this category recognizes advancements made by maximizing digital intelligence. In what may be a world-first, Drs. Barry and Wong are using space technology to help palliative care patients. Their project will track patients using a Hexoskin smart shirt and virtual appointments with the potential of changing the dynamics of cancer care.

Human Touch in Cancer Care Winners:

This category supports approaches that look to infuse comfort and confidence into every interaction a patient has, with a focus on equity, access, diversity, engagement, inclusivity, and communication. Grants were awarded to four distinct approaches:

Supporting Patient Caregivers:

Drs. Meredith Giuliani, Janet Papadakos, Sarah Hales, Rinat Nissim, Jennifer Croke and Breffni Hannon

The multi-disciplinary team behind this winning project is developing a program to provide family caregivers with comprehensive education, support, and skills they need to best care for themselves as well as their friends or family members who are suffering from cancer — creating the potential to transform support access for caregivers around the world.



Supporting Cultural and Linguistic Diversity:

Drs. Stephanie Lheureux and Alejandro Berlin

This project combines iPads, e-interpreters, and translated questionnaires to improve access to cancer care and the experience of cancer in patients with cultural and linguistic diversity, since research shows that having medical interpreter services improves both patient satisfaction and health outcomes.



Providing Psychosocial Support for All New Patients:

Dr. Madeline Li and Megan Wexler

Psychosocial care is of great value to cancer patients and their families — but it is often only delivered after distress occurs and to those most able to ask for it. Using technology, volunteer support, virtual and in-person education, and multiple communication approaches, this project will implement a multi-pronged strategy to achieve universal access to psychosocial services for all patients at The Princess Margaret.



Technology-Enabled Healthcare Provider Well-Being:

Drs. Mary Elliott and Alejandro Berlin

BRITE (Building Resilience within Institutions Together with Employees) was developed at The Princess Margaret to improve and sustain the well-being of healthcare providers, and this project seeks to expand it digitally. The iBRITE app, a new digital extension of the program, will allow for on-demand access, personalization, and data collection to respond to the ever-increasing need from healthcare workers for support.



Agnico Eagle's visionary commitment.



Agnico Eagle's Vice-Chairman and CEO, Sean Boyd, and Chairman, Jim Nasso.

A new \$10 million commitment from Agnico Eagle Mines will take cancer innovation at The Princess Margaret to the next level. For Sean Boyd, Vice-Chairman and CEO of Agnico Eagle, it is vital support that will help millions of people living with cancer. “Now more than ever, support from Corporate Canada has never been so critical to help accelerate life-saving cancer research and to improve the quality of life for so many,” he says. Boyd hopes that the high-impact work accomplished through their partnership will inspire other Canadian corporations to make similar meaningful investments.

This latest \$10 million commitment from the Canadian gold mining company brings their total support of the Foundation to more than \$25 million, signaling their vision for reinforcing Canada as a world leader in the mission to conquer cancer. More specifically, this gift is leading to the creation of two Agnico Eagle Princess Margaret Grand Challenges grants, which will drive leading-edge cancer research in two key areas: early detection and less-toxic treatments.

In the first area, the Agnico Eagle Intercept Cancer Grand Challenge will support research methods to detect cancer at curable stages, even before symptoms appear. Early detection, diagnosis, and intervention against cancer offers the strongest chance of survival for patients, improving the cure rate of most cancers five- to ten-fold. The longer-term goal of this challenge is to establish a world-leading early detection and cancer intervention program, benefiting patients here in Canada and around the globe.

For the second area of focus, the Agnico Eagle Beyond Chemotherapy Grand Challenge looks to accelerate efforts to eliminate the debilitating side effects for patients. This challenge supports the research of options to deliver less-toxic, more precise, and more personalized treatments. On top of that, the goal is to use Princess Margaret Cancer Centre’s world-class

expertise and infrastructure to position Canada as a global leader in the development of next-generation cancer therapeutics.

Discoveries made in each area will be put to the test in the Centre’s globally renowned clinical trials program, which transforms research into real results for patients. The Princess Margaret leads the world in this area, with 19% of patients in clinical trials — nearly double the number in the U.S. and U.K.

With capabilities like these, it is no surprise that Agnico Eagle sees the kind of meaningful support their company can bring. **“For Agnico, we look to prioritize our social investment in areas that show promise of greatest impact,” Boyd continues. “And The Princess Margaret fits the bill, leading the world in advancing cancer discoveries, diagnoses, and treatments to cure more patients and improve quality of life of those living with cancer.”**

Everyone at The Princess Margaret would like to express our deepest gratitude for Agnico Eagle’s visionary gift, which will allow us to not only showcase Canadian excellence and leadership for cancer innovation on the world stage, but which we believe will also inspire other major gifts from corporate Canada.

A patient-focused \$50 million makeover.

Thanks to the generous support of our donors, the first phase of our Space Transformation is nearly complete. As part of our ongoing commitment to patient-centred care, the entire ground floor has been reimagined into a bright, modern, and fully supportive environment for patients and loved ones alike. The fifth floor was also revitalized with a patient-first lens, allowing for more privacy during visits, integrated tools to help patients find the information they need, and thoughtful spaces that offer comfort and care for patients and caregivers. To mark the occasion of its opening, we invited the Toronto Symphony Orchestra to perform in the Cancer Centre, capturing the serenity and modernity of the space while allowing us to thank staff, patients, donors, and volunteers for their efforts during the pandemic.

Knowing that the physical attributes of any space can greatly impact the healing experience, each touchpoint within the Cancer Centre was carefully designed to match the level of care provided by our staff. From the moment they enter the space, people will know they are in a world-class facility.

Transformation updates include:


- The new, fully accessible Myhal Family Blood Collection/ECG Lab
- An expanded and fully staffed Magic Castle playroom where children can stay while their parents receive care
- Expanded seating lounges for patients and families
- Fully renovated clinics, including the creation of a new outpatient palliative care clinic

Your support of this historic project will have a positive impact on the hundreds of thousands of people who come through our doors each year. Thank you for your support.



Above: Members of the TSO perform in the Sean and Peta Boyd Family Lounge. Below: The Myhal Family Blood Collection/ECG Lab.

The Myhals make a cornerstone contribution.

A photograph of George and Rayla Myhal. George, on the right, is a middle-aged man with dark hair, wearing a blue suit, white shirt, and a striped tie. Rayla, on the left, is a woman with long, dark, wavy hair, wearing a black top. They are both smiling and standing in front of a blurred background that appears to be an indoor space with a staircase.

For George and Rayla Myhal, investing in their community is of great importance, having supported many important institutions in health care, education, and culture. And, like so many of us, their lives have been touched by cancer. Having served as a Senior Managing Partner and Officer of Brookfield Asset Management Inc., George understands the importance of a well-designed space. This is why George and Rayla made a pledge of \$5 million to our Space Transformation Campaign. Their generous gift will support innovation in the new Myhal Family Blood Collection/ECG Lab — a hub for every patient's journey.

The new Myhal Family Blood Collection/ECG Lab features 14 private draw stations, charging stations for mobile devices, and ample seating for all. “We have long known of the world-leading breakthrough discoveries at The Princess Margaret,” say George and Rayla Myhal. “It is a research powerhouse that we, as Canadians, can be proud of. Improving this space helps thousands of patients, caregivers, and staff, who are at the Cancer Centre every week, while supporting great scientific discovery.”

Thank you, George and Rayla, for helping us lead the way.

Supporting cancer research runs in the Longo family.



“

Princess Margaret Cancer Centre is the epicentre of cancer research. We are humbled knowing the impact this donation will have and continue to have on our families, our community, and patients around the world.”

The Longo's Family Charitable Foundation (LFCF) was established with a vision to build happier and healthier communities. That mission has been accomplished through several strategic investments in healthcare and the community.

Their connection to The Princess Margaret began in 2011, when the Longo family lost father, uncle, mentor, and friend Tommy Longo to leukemia. "He was so many things to so many people, and The Princess Margaret played a critical role in his care. Our entire family is forever grateful for that. It's a privilege to have world-renowned care in our own backyard," says Rosanne Longo, Chair of the LFCF.

That same year, Longo's cemented their commitment to conquering cancer by becoming the founding sponsor for Road Hockey to Conquer Cancer, one of our biggest peer-to-peer fundraising events. And in September of 2020, Longo's and the Longo's Family Charitable Foundation renewed that commitment by making a monumental \$2.5 million donation.

"Road Hockey has been an incredible event; it brought our family together to honour Uncle Tommy and we now have our own division with eight teams and 20 volunteers that come out to help fuel the participants. Together, we've raised over \$1.4 million and have re-committed to help conquer cancer."

—Rosanne Longo

The recent gift will be split between two major areas of impact, one being the Tumour Immunotherapy Program and the other, the Space Transformation Project.

"We know that cancer doesn't stop in the middle of a pandemic, and we have made it our mission to support the organizations leading the way in disease prevention" says Anthony Longo, President and CEO of Longo's.

The Tumour Immunotherapy Program has generated several targeted treatments that help to prolong life. So much so that the survival rate of those suffering from metastatic melanoma increased from just 20% to 60% between 2008 and 2018. Emerging research in immunotherapy is part of the LFCF's vision, and this generous donation will help to further increase that statistic in the years ahead.

In the Cancer Centre, the new Longo Family Lounge in the new and fully transformed Myhal Family Blood Lab Collection/ECG lab will provide comfort and privacy to all those who need the space as part of their cancer journey. "Our family knows from personal experience that the blood lab lounge is the first place you visit. To help create a safe and welcoming environment that matches the level of care provided was important to us." Rosanne says.

We at The Princess Margaret are forever grateful for the support of the Longo family and would like to acknowledge their generosity and commitment to helping us accelerate research, education, and clinical care here in Canada and around the world.

Thank you, Longo family, for being a valiant partner in our mission to conquer cancer.

Your front row seat to the future of cancer care.

Invest in Research

Want a say in the next big breakthrough in cancer research? When you support the Invest in Research program at The Princess Margaret, you join a select group of investors who work directly with some of the brightest minds at the Cancer Centre to decide which ideas will help shape the future of cancer.

Every year, the Invest in Research program reviews a short list of candidates working on new and innovative cancer research projects. From that list, donors vote on which projects will be granted \$100,000 to embark on their bold and innovative ideas. While all advancements in research have the potential to create impact, this program focuses on funding higher-risk research that has the potential for much higher rewards.

This past year, thanks to the exceptional generosity of our investors, we were able to award grants to three promising research projects:



Dr. Geoffrey Liu's project is focusing on earlier detection of lung cancer that could be quickly integrated into existing screening programs across Canada and around the world.



Dr. Catherine O'Brien is leading a project which aims to target and destroy cancer cells before they "hibernate" and resist chemotherapy, which may yield advancements for colorectal cancer patients.



Dr. Anna Spreafico and her team are seeking to improve our ability to predict which melanoma patients are at high risk of recurrence in order to plan more personalized therapy or avoid unnecessary treatments altogether.

To date, Invest in Research has raised \$2 million in donations with our investors having funded 25 projects, each one holding promise that will one day help us conquer cancer. To learn more about these projects and about the impact you can make with this program, visit thepmcf.ca/Invest-In-Research.



“

Your investment today will do more than help us stay on track. It will help fund the daring and bold ideas that change the way cancer is treated here in Canada and around the world.”

—Dr. Aaron Schimmer,
Director of Research, Princess Margaret Cancer Centre

Ready to invest? Contact Karina Wong, Manager,
Leadership Giving, Karina.Wong@thepmcf.ca

Learn more about the impact of seedfunding at:
thepmcf.ca/Invest-In-Research

Till & McCulloch: Saluting the changemakers.



Vicki and Fred Tomczyk.



Funding the research that helps to detect and treat cancer in a timely, less intrusive manner is of the utmost importance to us. It has been an incredibly rewarding experience to follow the brilliant research team knowing that we are helping to provide hope for future generations.”

—Fred & Vicki Tomczyk

Founded in 2015, The Till & McCulloch Society honours supporters who have cumulatively contributed \$1 million or more to advance the future of cancer care at The Princess Margaret.

These visionary supporters provide our clinicians and researchers with the resources to explore new ideas, drive breakthroughs, and offer the best possible care to patients.

Supporters like Fred and Vicki Tomczyk, who joined the society in 2013. This past year, the couple renewed their commitment to The Princess Margaret by investing in a program that uses non-invasive technologies and artificial intelligence methods to monitor cancer patients with the highest risk of cancer relapse. The program will also aim to enable effective interception strategies to prevent relapse and ultimately cure these patients.

We are extremely grateful to the members of the Till & McCulloch Society for sharing in our mission to Conquer Cancer in Our Lifetime.

For more information about becoming a member, please contact T&MSociety@thepmcf.ca.



Till & McCulloch Society *
The Princess Margaret Cancer Foundation

Agnico Eagle	Longo's Family Charitable
Daniel C. Andreae	Foundation and Longo Brothers
Andrée Rhéaume and Robert	Fruit Markets Inc.
Fitzhenry Family Foundation	Jon and Nancy Love
Susan and Murray Armitage	Ronald MacFeeters, Sheila
AstraZeneca Canada Inc.	MacFeeters, Laura MacFeeters
The Atkinson Charitable	and Elizabeth Hamilton
Foundation	John and Gail MacNaughton
The Bhalwani Family	Tak Mak Family
Molly and David Bloom	Lynn and Robert G. Matthews
BMO Financial Group	Margaret and Wallace McCain
Boehringer Ingelheim (Canada) Ltd.	Merck Canada Inc.
Maggie Bras and Family	The Michael Young Family
David and Paula Butterfield	Foundation
CARA Operations Limited	Nadir and Shabin Mohamed
Family of Haji Usman Dawood	Foundation
Choksi	Myhal Family Foundation
CIBC	The Norman and Marian
John and Myrna Daniels	Robertson Charitable
The DH Gales Family Foundation	Foundation
Bob Dorrance and Gail	The O'Neil Foundation
Drummond	Pancreatic Cancer Canada
Sherry and Edward Drew	Foundation
The Elia Family	Joan W. Parkes
The Elizabeth and Tony Comper	Nancy Pencer and Family
Foundation	Pfizer Canada Inc.
Joyce and Philip Epstein	The Posluns Family Foundation
Graham Farquharson	RBC Foundation
FDC Foundation	Nita and Don Reed
Gordon and Donna Feeney	Ted and Margaret Riley
Nicholas and Lia Fidei	RioCan REIT
Front Street Capital Charitable	Richard Rooney and Laura Dinner
Foundation	Larry Rosen and Susan Jackson
Janice Fukakusa and Greg	The Samuel Family Foundation
Belbeck	Scotiabank
Bruce Galloway	Etta and Shiri (Shri) Shastri
Myron and Berna Garron	Shoppers Drug Mart
The Gerald Schwartz & Heather	Allan Slight and Emmanuelle
Reisman Foundation	Gattuso
Peter and Shelagh Godsoe and	Slight Family Foundation
Family	S.O. Asher Consultants Ltd.
Mitchell Goldhar	The Strobele Family
Greenpark Group	Kevin and Sandra Sullivan
The Gucciardi Family	Joey and Toby Tanenbaum
Giovanni & Concetta Guglietti	Tauba & Solomon Spiro Family
Family	Foundation
Hoffmann-La Roche Ltd.	Joan and Ken Taylor
Hold'em for Life Charity Challenge	TD Bank Group
I.U.O.E. , Local 793	J.W. Nevil Thomas and Family
The Jack Weinbaum Family	Edward G. Thompson and Family
Foundation	Fred and Vicki Tomczyk
Janet D. Cottrelle Foundation	Tony and Wendy Traub
Jesse & Julie Rasch Foundation	Warren-Connelly Families
The Allan and Ruth Kerbel Family	The WB Family Foundation
Neville and Lorraine Kirchmann	The Westaway Charitable
The Lewitt Family Foundation	Foundation
Lilly	Robert and Gerardina Wharton
	and Family
	Yamana Gold Inc.
	Anonymous (10)

*Names appear with express permission received from the donor

With your support, we redefined our events.

“

This year, I committed to participate in the Ride to Conquer Cancer for the first time. Even though COVID-19 altered the original event, it did not diminish the overwhelming feeling of camaraderie, support, and togetherness. I was taken aback by the lasting impact it has had on me.”

—Lisa Harris, first time Ride participant





Muskoka's premiere cycling event went virtual in 2020, allowing riders from across Canada (and as far away as Germany) to ride for cancer research.

NorthernPass.ca



This new initiative saw gamers raising money in Canada's largest streaming fundraiser, with most donations coming from supporters outside of Canada!

QuestToConquerCancer.com



Our signature walking event, now 18 years strong, saw more than 1,600 walkers lace up for our first-ever virtual event.

WeekendToConquerCancer.ca



Journey held its final walk, raising a total of \$11 million since it began. Our epic supporters will carry its spirit forward as part of The Weekend to Conquer Cancer™.



The Enbridge® Ride to Conquer Cancer® went virtual for the first time in 13 years, with more than 4,000 riders creating their own adventures across the country and beyond.

Ride2Conquer.ca



The world's largest road hockey fundraiser went virtual in 2020 with Legends Go Live, an online contest with 21 unique celebrity experiences.

RoadHockeyToConquerCancer.ca



\$46.4M

Net lottery revenue

For 25 years, The Princess Margaret Home Lottery has been giving away one big prize after another, raising millions for critical cancer research. Not even COVID-19 could stop that, with this year bringing record-setting sales.

PrincessMargaretLotto.ca

Even through uncertainty, our donors and supporters came through.

The 2020 events season didn't play out exactly as we had envisioned. While many fundraising events around the world were cancelled, we were determined to find ways to engage meaningfully (and safely) with our dedicated participants. Your ongoing support gave us the confidence to move forward with modified versions of each of our events, plus some new virtual initiatives. We can't thank you, our passionate community, enough for your commitments through this challenging year that continues to have a transformational effect on the lives of cancer patients.

Despite COVID-19, this year our events saw:

 **12,000**
registered participants

who joined us from
 **27** countries

to raise more than
 **\$13M**

Thank you to our Cancer Centre colleagues.



COVID-19 affected every aspect of healthcare in Canada and around the world. At The Princess Margaret, this was no exception. Our healthcare staff at the Cancer Centre was stretched and challenged like never before. The demands of the pandemic have been exceptional, and yet, our colleagues displayed a remarkable level of resilience and determination to put the needs of patients first. For this ongoing dedication, we are eternally grateful for their service.

How You Supported our Cancer Centre

We launched the Conquer COVID for Cancer Fund to support our Cancer Centre partners. Thanks to the kindness of our community, we generated a remarkable \$1.8 million. Here's how you helped:

- You provided patients with tablets that kept them safely connected with loved ones
- You provided hot meals, free parking, and nearby accommodations to our healthcare team when they needed it the most
- You helped our Smart Cancer Care team deliver seamless virtual care to limit the potential for patient COVID exposure, while upholding an excellent standard of care (85% of patients said that the quality of care was comparable or better than in-person visits*)
- You helped fast-track crucial COVID-related clinical trials, allowing our researchers to contribute to the global race to understand and contain the virus

* Results from research study led by Dr. Berlin, published in JAMA Oncology in January 2021

The Rose Dean Essence of Oncology Nursing Award

Every day across The Princess Margaret, oncology nurses go above and beyond to provide exceptional support, compassion, and care for patients, their families, and caregivers.

This award is presented annually to an oncology nurse in recognition of their outstanding contribution to nursing within the cancer program aligned with the “best of nursing” themes. This includes the power of presence and truly “being with” patients and colleagues, providing excellent practice, and fostering an environment that enables nurses to be their best.

We are thrilled to recognize Nicole Sommerville as the 2021 award recipient. Nicole provided exceptional patient care and expertise while starting a new role in head and neck cancer, all while navigating the uncertainty and stress of the pandemic.



The Gerald Kirsh Humanitarian Awards

These awards are a longstanding event that allows us to recognize and honour the compassionate care that is so integral to The Princess Margaret patient experience. We are thankful to the Kirsh Family, who had the vision to establish this important award after having experienced exceptional care by the Cancer Centre’s staff and volunteers who cared for their father and husband, Gerald.

While this year’s ceremony was a virtual one, it was no less impactful. We honoured these three staff members who went above and beyond the call of duty to provide outstanding care.



(From top to bottom) Dr. Madeline Li, Psychiatrist; Robin Forbes, Social Worker; and Dr. Jennifer Croke, Radiation Oncologist.

For Suzanne Ramsay, the choice was always love.



“

Suzanne's wish was to support all women affected by cancer.”

—Jim Ramsay

Suzanne met Jim in university. “She was a brilliant academic.” Excelling her way through school, emerging a passionate teacher of French immersion and student of life. “Madame Ramsay maintained a lifetime of learning, and teaching, wherever she went she taught and changed lives,” Jim says.

Following a passionate and dedicated career, Suzanne established her own wellness business. The Ramsays then designed and built a summer home on PEI, one known to friends as a “little piece of

heaven.” Suzanne had time to paint, to garden, and together they lived a healthy, active lifestyle. Suzanne also gave inspirational talks to women. “She taught me how to stop and smell the flowers. Her energy was endless,” remembers dear friend Eynat. For the Ramsays, life was everything they hoped it to be, but in the fall of 2015, things changed.

After a trip to the Magdalen Islands, Suzanne noticed a lump in her abdomen, and it was growing fast. Immediate tests led to a heartbreaking discovery: ovarian cancer. The diagnosis affected everyone. “When your wife has cancer, you have cancer, we had cancer,” Jim says.

That winter, Suzanne faced an extensive surgery that brought with it complications. But even on her most challenging days, her outlook was exceptional. “She was teaching by example,” Jim says, “remaining positive and caring with everyone involved.” He often said that he was proud of Suzanne, to which she always replied “I am so proud of you, Jim. You’re the one that must watch.”

“Suzanne and I shared an understanding. Life was immediate and full if we chose to make it so.” —Ovarian cancer patient and friend, Donna.

Suzanne began an aggressive chemo cycle, which worked for some time, but when the cancer came back, she underwent tests to see if she would be a suitable candidate for clinical trials. She was accepted, and Dr. Stéphanie Lheureux intervened with a new drug combination that controlled her cancer for close to 14 months. The Ramsays traveled to France and continued living life to the fullest. Unfortunately, the cancer metastasized, making its way to Suzanne’s brain. After 52 years together, Jim said his goodbyes to Suzanne, and the news of her passing ripped like a tidal wave. She is achingly missed.

By leaving an extraordinary gift in his will, Jim was able to fulfill Suzanne’s wish of providing easier access to clinical trials and empowering all women facing gynecological cancers. The donation will put patient needs front and centre by decreasing

systematic barriers to participation. Dr. Lheureux is already leveraging the momentum of virtual care to intervene.

“Suzanne’s wish,” Jim says, “was to support all women affected by cancer. Many women are faced with this horrific diagnosis, but she always believed in choice. Suzanne knew that how you respond is critical to how you live.”

Throughout life, Suzanne was governed by positive affirmations and the choice of love was never more evident than when facing the ultimate challenges of her own cancer. She made a difference in every facet of her life, and will continue to do so for other women facing ovarian cancer through this gift.



For more information or to tell us you’ve made a gift in your will, contact Jill Nelson, AVP Estates and Gift Planning.

jill.nelson@thepmcf.ca • 416-738-7329

With deep gratitude to Janice and welcome to Richard.



Incoming Chair of the Board of Directors, Richard Rooney, with Janice Fukakusa.

With heartfelt appreciation, we mark the end of Janice Fukakusa's term as Chair of the Board of Directors for The Princess Margaret Cancer Foundation. An internationally recognized financial services expert, innovation champion, and diversity leader, Janice joined the Board as a Director in 2011 and has played a pivotal role in accelerating life-saving cancer research and care through philanthropy. She was also instrumental in elevating the Foundation through a new strategic plan in 2019, and served as a beacon of strength and optimism during our response to COVID-19. We are thrilled that Janice will remain on the Board for another year, working closely with our incoming Chair, Richard Rooney, and our new President and CEO, Miyo Yamashita.

We are delighted to welcome Richard as incoming Chair. The Chief Investment Officer of Burgundy Asset Management Ltd. for over 20 years -- now Vice-Chair and Co-Founder -- Richard has been a steadfast supporter of The Princess Margaret, in addition to holding leadership positions on the boards of other prominent Canadian foundations. We know Richard will bring great dedication to this role, having first joined the Foundation's Board of Directors in 2017, and look forward to working with him to support the world-class impact delivered by The Princess Margaret.

On behalf of our entire community, we thank you, Janice, and say a warm welcome, Richard!

Board of Directors

The Princess Margaret Cancer Foundation

April 1, 2020 to March 31, 2021

Janice Fukakusa

Board Chair
Chancellor
Ryerson University

Mark Allison

VP Real Estate
Performance Auto Group

Terry Bacinello

President
TZB Holdings

Rohit Bhapkar

Senior Partner
McKinsey & Company

Sean Boyd

CEO
Agnico Eagle

J-F Courville

Managing Partner
Purpose Advisor Solutions

Bob Dorrance**

Chairman
TD Securities

David Engel*

Owner and Chief Innovation Officer
Innovative

Marnie Escaf*

Senior Vice-President, UHN
Executive Lead,
Princess Margaret Cancer Centre

Mary Filippelli**

Corporate Director

Harry Goldgut

Vice-Chairman, Infrastructure and Power
Brookfield Management Inc.

Dr. Mary Gospodarowicz*

Medical Director
Princess Margaret Cancer Centre

Helen Mallovy Hicks**

Corporate Director
PwC Canada

Andrew L. Hoffman*

Chief Executive Officer
CentreCourt Developments Inc.

Candace Innes

Marketing Consultant

Andrew Irvine*

Group Executive, Business & Private
Banking
National Australia Bank

Judith Irving**

Philanthropist

Christina Kramer

EVP, Retail Distribution and
Channel Strategy
CIBC

Stacey Madge

Country Manager & President
Visa Canada

Bill Richardson*

Senior Partner
Baker & McKenzie LLP

Richard Rooney

Vice Chair and Co-Founder
Burgundy Asset Management

Annie Ropar

Principle
Istina Strategic Advisors Inc.

Jürgen Schreiber

Senior Management Director
Katz Group

Dr. Aaron Schimmer

Research Director
Princess Margaret Cancer Centre

David R. Shaw*

Chairman
LHH/Knightsbridge and Axsium

Duncan Sinclair

Chairman
Deloitte Canada and Chile

Kevin Smith

President & CEO
University Health Network

Dr. Keith Stewart

VP Cancer
University Health Network

Humza Teherany**

Chief Technology & Digital Officer
Maple Leaf Sports & Entertainment

Jochen Tilk

Corporate Director

Stuart Waugh

Managing Director & Partner
Northleaf Capital Partners

Michael Worb*

Founder & CEO
Accompass

Dr. Bradley Wouters

Executive Vice-President,
Science and Research
University Health Network

Donna E. Young**

Dean
Faculty of Law Ryerson University

Our thanks are also extended to the following individuals from our community of supporters who also serve on committees of The Princess Margaret Cancer Foundation:

Anish Chopra
Tom Ehrlich
Stephen Goldhar
Douglas Greaves

Marianne Harris
Maureen Shaughnessy Kitts
Angela McDonald
Lawrence Pentland

Tina Tehranchian
Michael Wilson
Betsy Wright
Aazar Zafar

*Board term ended at September 2020 Annual General Meeting.

**Board term began at September 2020 Annual General Meeting.

Board of Trustees

University Health Network (UHN)

April 1, 2020 to March 31, 2021



Brian J. Porter, Board Chair,
UHN Board of Trustees



Kevin Smith, President and CEO,
UHN

Elected Trustees (Voting)

Brian J. Porter

Board Chair
President and Chief Executive Officer
Scotiabank

Ross Baker

Professor, Institute of Health Policy,
Management and Evaluation
University of Toronto

Dean Connor

President and Chief Executive Officer
Sun Life Financial

Todd Halpern

President
Halpern Enterprises

Stu Kedwell

Senior Vice-President & Senior Portfolio
Manager, Co-Head North American Equities
RBC Global Asset Management

Peter Menkes

President, Commercial/Industrial Division
Menkes Developments Ltd.

Lawrence Pentland

Former Executive
Dell Inc.

Janet Rossant

Senior Scientist
SickKids
Professor
University of Toronto

Mark Saunders

Former Chief of Police
Toronto Police Services

Shirlee Sharkey

Chief Executive Officer
SE Health

Barbara Stymiest

Corporate Director
*Blackberry Ltd., George Weston Ltd.,
Sun Life Financial*

Ajay Virmani

President and CEO
Cargojet

Peter Wallace

Secretary of the Treasury Board
Government of Canada

Jaime Watt

Executive Chairman
Navigator

Cornell Wright

Executive Vice President
Wittington Investments Limited

Trustees Appointed by U of T Governing Council (Voting)

Cheryl Regehr

Vice-President & Provost

Trevor Young

Dean, Faculty of Medicine
& Vice-Provost
Relations with Health Care Institutions

Ex Officio Trustees (Non-Voting)

Janice Fukakusa

Chair
The Princess Margaret Cancer Foundation
Chancellor
Ryerson University

Raj Kothari

Chair
UHN Foundation
Vice-Chair, Partner
PWC Canada

Patricia Murphy

Chair
Medical Advisory Committee

Mark Osten

President
Medical Staff Association

Joy Richards

Vice-President Patient Experience & Chief
of Health Professions

Kevin Smith

President & CEO
University Health Network

Chairs

A Chair is the highest honour in academic life, prestigious for Chairholder and donor alike. Our Chairholders are recognized internationally for superior academic achievement, experience and success in teaching and research. A sincere thank you to our donors who fund these prestigious positions.

List as of September, 2021

Princess Margaret Cancer Centre Held Chairs

	Chairholders
AMGEN Chair in Cancer Research	Dr. Robert Rottapel
Bartley-Smith Wharton Chair in Radiation Oncology	Dr. John Waldron
Daniel E. Bergsagel Chair in Medical Oncology	Dr. Amit M. Oza
Molly and David Bloom Chair in Multiple Myeloma Research	Dr. Donna Reece
BMO Financial Group Chair in Precision Genomics	Dr. Lillian Siu
Alan B. Brown Chair in Molecular Genomics	Dr. Geoffrey Liu
Ronald N. Buick Chair in Oncology Research	Dr. Aaron Schimmer
Butterfield/Drew Chair in Cancer Survivorship Research	Dr. Jennifer Jones
M. Qasim Choksi Chair in Lung Cancer Translational Research	Dr. Ming S. Tsao
Richard H. Clark Chair in Cancer Medicine	Dr. Keith Stewart
J. Douglas Crashley Chair in Gynecologic Cancer Research	Dr. Sarah Ferguson
Dr. Mariano Antonio Elia Chair in Head and Neck Cancer Research	Dr. Scott Bratman
Anna-Liisa Farquharson Chair in Kidney Cancer Research	Dr. Antonio Finelli
Orey and Mary Fidani Family Chair in Radiation Physics	Dr. Jan Seuntjens
Gattuso Chair in Breast Surgical Oncology	Dr. Tulin Cil
Peter and Shelagh Godsoe Chair in Radiation Medicine	Dr. Fei-Fei Liu
JCB Grant Chair in Oncologic Pathology	To be appointed
Gullane Family/O'Neil Family Chair in Otolaryngology/Head and Neck Surgery	Dr. Ralph W. Gilbert
Kirchmann Family Chair in Neuro-Oncology Research	Dr. Warren Mason
K. Y. Ho Chair in Prostate Cancer Research	To be appointed
Lee K. and Margaret Lau Chair in Breast Cancer Research	Dr. Razq Hakem
Harold and Shirley Lederman Chair in Psychosocial Oncology and Palliative Care	Dr. Camilla Zimmermann
Wilfred G. Lewitt Chair in Pancreatic Cancer Research	Dr. Jennifer J. Knox
The Love Chair in Prostate Cancer Prevention Research	Dr. Neil Fleshner
The Addie MacNaughton Chair in Thoracic Radiation Oncology	Dr. Alexander Sun
Philip S. Orsino Chair in Leukemia Research	Dr. Mark D. Minden
OSI Pharmaceuticals Foundation Chair in Cancer New Drug Development	Dr. Natasha B. Leighl
RBC Chair in Nursing Oncology, Research and Education	Dr. Samantha Mayo
Kevin and Sandra Sullivan Chair in Surgical Oncology	Dr. Jonathan C. Irish
Joey and Toby Tanenbaum/Brazilian Ball Chair in Prostate Cancer Research	Dr. Housheng He
The Weekend to End Breast Cancer Chair in Breast Cancer Research	Dr. Tak W. Mak
Trachtenberg/Haque Chair in Image Guided Prostate Therapy Research	Dr. Heidi Schmidt
Westaway Chair in Ovarian Cancer Research	To be appointed
The Robert E. Wharton Chair in Head and Neck Surgery	Dr. Patrick J. Gullane
The Robert E. Wharton Chair in Reconstructive Plastic Surgery	Dr. Stefan O. Hofer

Joint Chairs At University Health Network

	Chairholders
Gloria and Seymour Epstein Chair in Cell Therapy and Transplantation	Dr. Jonas Mattsson
Fleck/Tanenbaum Chair in Prostatic Diseases	To be appointed
The Alan and Susan Hudson Chair in Neuro-Oncology	Dr. Fred Gentili
Pearson/Ginsberg Chair in Thoracic Surgical Oncology	Dr. Thomas Waddell
Scotiabank Research Chair	Dr. David Brooks
Scott Taylor Chair in Lung Cancer Research	Dr. Frances A. Shepherd
J. Gerald Scott/David G. Whitmore Chair in Hematology and Gene Therapy Research	To be appointed

Financial Summaries

5-Year Overview

Each year, The Princess Margaret Cancer Foundation reports on the funds it raises and stewards in two ways: via Audited Financial Statements (AFS) online at www.thepmcf.ca, and via the standard CRA T3010 form required of all not-for-profit organizations and found on the CRA website at canada.ca/en/services/taxes/charities.html. While both formats utilize the same financial information, The Foundation’s AFS provides a more detailed look, to better assess and control our financial performance.

Statement of Revenue, Expenses and Changes in Fund Balances (\$ Thousands)

Year ended March 31	2017	2018	2019	2020	2021
Gross Fundraising Revenue	95,202	98,590	91,822	122,861	85,898
Direct Fundraising Expenses ¹	(14,990)	(16,237)	(21,998)	(24,434)	(15,859)
Net Fundraising	80,212	82,353	69,824	98,427	70,039
Gross Lottery Revenue	72,334	78,897	88,239	102,904	113,170
Direct Lottery Expenses	(44,640)	(49,170)	(54,627)	(61,322)	(66,772)
Net Lottery	27,694	29,727	33,612	41,582	46,398
Net Fundraising and Lottery Revenue	107,906	112,080	103,436	140,009	116,437
Investment Income (Loss)	45,006	31,561	36,964	(5,153)	114,444
Net Revenue, including Investment Income	152,912	143,641	140,400	134,856	230,881
General Fundraising and Administrative Expenses ²	(11,287)	(12,467)	(9,603)	(9,743)	(10,886)
Excess of Revenue over Expenses before Grants	141,625	131,174	130,797	125,113	219,995
Grants to Princess Margaret Cancer Centre					
Building	(3,724)	(8,552)	(9,635)	(8,661)	(16,709)
Research, Education and Patient Care	(89,118)	(95,928)	(93,169)	(92,998)	(92,587)
Equipment	(9,618)	(2,083)	(1,868)	(4,122)	(3,741)
	(102,460)	(106,563)	(104,672)	(105,781)	(113,037)
Excess of Revenue over Expenses and Grants for the year	39,165	24,611	26,125	19,332	106,958
Fund Balances					
Endowments	250,297	271,911	294,553	271,702	362,660
Restricted	271,819	269,782	276,936	325,210	333,390
General	15,143	20,177	16,506	10,415	18,235
	537,259	561,870	587,995	607,327	714,285
Held By University of Toronto (as of April 30)	15,337	15,689	15,824	15,156	18,184
Total Capital	552,596	577,559	603,819	622,483	732,469

Notes 1. Direct fundraising expenses represent costs for logistics, marketing and other expenses directly related to fundraising activities, including our major events such as Enbridge® Ride to Conquer Cancer®, The Weekend to Conquer Cancer™ and our Direct Marketing programs.
 2. General fundraising and administrative expenses are the overhead costs associated with running Foundation operations.

Fiscal 2021

The Princess Margaret Cancer Foundation is passionate about impact, efficient fundraising, and effective stewardship to ensure we can achieve our collective vision to Conquer Cancer in Our Lifetime.

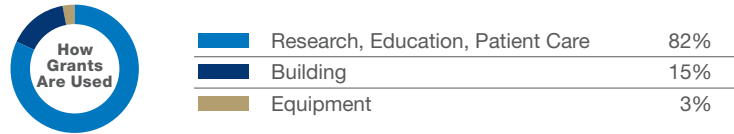
Fulfilling our Mission

Our mission is to raise and steward funds to deliver breakthrough research, exemplary teaching, and compassionate care at the Princess Margaret Cancer Centre, one of the top 5 cancer research centres in the world.

Based on reported net fundraising revenue and lottery revenue (\$116.4 million):



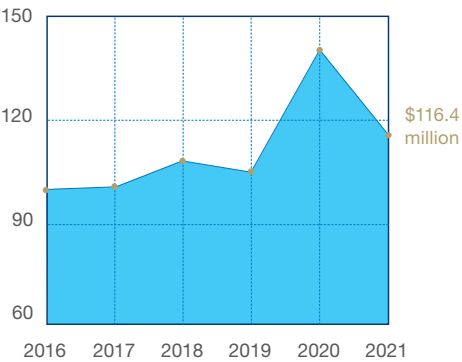
Grants provided to Princess Margaret Cancer Centre (\$113.0 million):



Beyond funds granted this year (\$113.0 million), the Foundation has multi-year research and clinical commitments in progress at Princess Margaret Cancer Centre.

Year-over-year highlights

Net fundraising and lottery revenue (\$ millions)

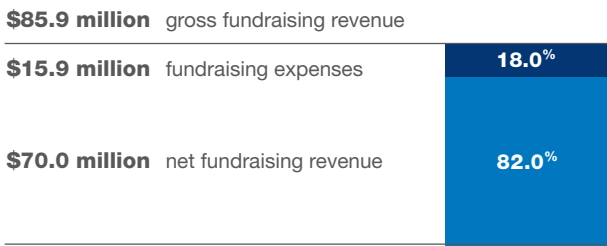


Distinct revenue streams

Gross revenue (excluding investment income) of \$199.1 million disclosed in the CRA T3010 form is composed of two distinct revenue streams: fundraising revenue and lottery revenue. Cost ratios associated with these streams are treated differently by the CRA.

← Total gross fundraising revenue \$199.1 million →

Fundraising revenue



Direct fundraising expenses include costs for logistics, marketing, and other costs directly related to strategic events and annual programs.

Lottery revenue



The PMCF lottery net return of 41.0% compares favourably to the industry average return of 34.0% based on the top charitable lotteries in Ontario. The PMCF lottery cost ratio of 59.0% is substantially lower than CRA acceptable guidelines (70.0%+).

Fundraising efficiency measure

The PMCF raised \$1.29 million per full-time employee, making it one of the most efficient and effective charities in Canada.



Conquering the odds.

“That day was the worst day of my life.”

Kara Thornhill had just been told she likely had cholangiocarcinoma, a very rare and highly aggressive liver cancer with a five-year survivor rate of less than 10%. At 37 years old with two young daughters and a bright teaching career ahead of her, facing cancer wasn't part of the plan.

In March of 2017, Kara went to her family doctor to check on symptoms of intense itching, digestion issues, and fatigue. A series of tests ensued. Bloodwork and an ultrasound showed a mass, and then a CT scan and MRI confirmed the doctors' suspicions: on May 8, 2017, she was diagnosed with cholangiocarcinoma.

Kara was told cholangiocarcinoma is a terminal cancer, as there is no one cure and the available treatments can, at best, prolong a patient's life. As terrible as that day was, she knew she needed to focus on moving forward for her daughters, despite the odds. She remembers telling herself, “I've got to put one foot in front of the other. I've got to do this.”

Kara was then referred to The Princess Margaret, where a team of doctors had developed an experimental protocol for cholangiocarcinoma. Dr. Laura Dawson, Kara's Radiation Oncologist at the Cancer Centre, emphasized the importance of teamwork behind this unique and very specialized treatment: “This is a multi-disciplinary effort. The liver transplant team, radiation oncology, and the medical oncology team have come together and devised a protocol (that's) not available anywhere else in Canada.” The gruelling protocol entailed a series of tests and surgical procedures, as well as four weeks of

daily radiation and chemotherapy, with the end goal of having a liver transplant. There were no guarantees, but Kara saw it as her “best chance at long-term survival.”

With her family by her side and with guidance from Dr. Dawson and the entire medical team, Kara continued moving forward. As the doctors at The Princess Margaret prepared for the transplant, her family was there to support her every step of the way, from helping with childcare and cooking meals, to taking her to appointments, and even living with her in a Toronto hotel during her rigorous radiation treatment. It was only natural, then, that Kara's sister Tanya would step up in the most ultimate way: by volunteering to be her liver donor. “I am beyond blessed for the support and the love that I have from my family,” Kara reflects.

Family is what helped carry Kara through the entire process, and what inspired her to push back against her dire diagnosis. She became the eighth person in Canada to successfully complete The Princess Margaret's protocol for cholangiocarcinoma. Today, Kara is NED (no evidence of disease). “When you have two human beings who depend on you, you can't crawl into bed and cry,” Kara says, “You've got to keep moving.” Four years after that terrible day, against all odds, that's exactly what she's doing.

[Click to watch Kara's story in her own words.](#)

Kara Thornhill with her two daughters and sister Tanya, who volunteered as her liver donor.



“

What inspired me was my kids. Living for my children. My faith in myself and in the doctors.”

Board Committees

The Princess Margaret Cancer Foundation

April 1, 2020 to March 31, 2021

Board Committee	Leadership	Membership
Executive Committee	Chair: Janice Fukakusa	Sean Boyd Stacey Madge Richard Rooney Annie Ropar Duncan Sinclair Kevin Smith Jochen Tilk Stuart Waugh
Audit & Risk	Chair: Annie Ropar	Janice Fukakusa Christina Kramer Helen Mallovy-Hicks Richard Rooney Duncan Sinclair
Commercialization	Chair: Stuart Waugh Vice Chairs: Rohit Bhapkar J-F Courville	Terry Bacinello Michael Crackower (Community) Janice Fukakusa Angela McDonald (Community) Ex Officio (Non-Voting): Lawrence Pentland, (Chair, UHN Board Research Committee) Dr. Aaron Schimmer (Research Director, PM Cancer Centre) Mark Taylor (UHN) Dr. Brad Wouters (UHN)
Governance	Chair: Duncan Sinclair	Nancy Carroll (Community) Mary Filippelli Janice Fukakusa Candace Innes Maureen Shaughnessy Kitts (Community) Donna Young
Granting, Stewardship & Impact	Chair: Sean Boyd	Janice Fukakusa Harry Goldgut Judith Irving Christina Kramer Richard Rooney Jochen Tilk Betsy Wright (Community) Ex Officio (Non-Voting): Dr. Aaron Schimmer (PM Research Director) Dr. Keith Stewart (VP, Cancer) Dr. Brad Wouters (UHN VP Research)

Board Committee	Leadership	Membership
Human Resources Committee	Chair: Stacey Madge	Janice Fukakusa Richard Rooney Humza Teherany
Investment	Chair: Richard Rooney	Terry Bacinello Anish Chopra (Community) Bob Dorrance Janice Fukakusa Stephen Goldhar (Community) Douglas Greaves (Community) Marianne Harris (Community) Stuart Waugh Aazar Zafar (Community)
Fundraising Advisory Board	Chair: Jochen Tilk	Mark Allison Tom Ehrlich (Community) Janice Fukakusa Harry Goldgut Stacey Madge Jürgen Schreiber Duncan Sinclair Tina Tehranchian (Community) Michael Wilson (Community)

UHN Governance Appointments

Committee	Role	Name
UHN Board of Trustees	Board Chair	Janice Fukakusa
UHN Finance & Audit Committee	Chair, Audit & Risk Committee	Annie Ropar
UHN Research Committee	Chair, Granting, Stewardship & Impact	Sean Boyd

Our Donors

Contributions reflect lifetime giving starting at \$25K+. Thank you to all donors who have given so generously.

TRANSFORMATIONAL
\$10,000,000+

Agnico Eagle
The Campbell Family
FDC Foundation
The Gerry and Nancy Pencer Brain Trust
Susan E. Grange
In Honour of Al Hertz
Hold'em for Life Charity Challenge
Glenn Hunnings
Family of Michael H. McCain
Radiation Oncologists - Princess Margaret Cancer Centre
The Slight Family Foundation
Allan Slight and Emmanuelle Gattuso

VISIONARY
\$5,000,000-\$9,999,999

BMO Financial Group
In Honour of Harry and Cissy Clark, and Nelson and Vesta Clark
The Elizabeth and Tony Comper Foundation
Graham Farquharson
Dr. Geoffrey R. Conway Memorial Foundation
The Gerald Schwartz & Heather Reisman Foundation
IBM
The Allan and Ruth Kerbel Family
Lee and Margaret Lau
Ronald MacFeeters, Sheila MacFeeters, Laura MacFeeters and Elizabeth Hamilton
Myron and Berna Garron
The Muzzo Family
Myhal Family Foundation
Philip S. Orsino
RBC Foundation
Richard Rooney and Laura Dinner
The Samuel Family Foundation
Gabiella Schmidt
Warren-Connelly Families
Robert and Gerardina Wharton and Family
Family and Friends of Lusi Wong

PIONEER
\$1,000,000-\$4,999,999

The Al Hertz Family Foundation
Amgen Canada
Daniel C. Andreae
The Andrée Rhéaume and Robert Fitzhenry Family Foundation
Susan and Murray Armitage
Arthritis Research Foundation
Astellas Pharma Canada Inc.
AstraZeneca Canada Inc.
The Atkinson Charitable Foundation

Anne Bartley-Smith
The Bhalwani Family
Molly and David Bloom
Boehringer-Ingelheim (Canada) Ltd.
Penelope Bonner
Sean and Peta Boyd
Maggie Bras and Family
David and Paula Butterfield
Klaus Bytzek Family
Evelyn C. Byworth
Canadian Cancer Society
Celgene Corporation
Haji Usman Dawood Choksi Family
CIBC
Betty Florence Clark
Helen Mabel Cooke
J. Douglas Crashley
The DH Gales Family Charitable Foundation
John and Myrna Daniels
Deloitte Touche Tohmatsu LLC
Department of Supportive Care
E.L. (Ted) Donegan
Robert Dorrance and Gail Drummond
Sherry and Edward Drew
The Drimmer Family
Enbridge Gas Distribution
Joyce and Philip Epstein
Gordon and Donna Feeney
Saul and Toby Feldberg and Family In Honour of Philip Feldberg
Lee Barbara Feldman
Nicholas and Lia Fidei
Catherine E. Frame
Jack Morris Freiman
Front Street Capital Charitable Foundation
Janice Fukakusa and Greg Belbeck
Bruce Galloway
Giovanni and Concetta Guglietti Family Foundation
Peter and Shelagh Godsoe and Family
Harry and Gayle Goldgut and Family
Mitchell Goldhar
Murray Goldman
Greenpark Group
Gucciardi Family
Harry Rosen Inc.
Hatch Ltd.
K.Y. Ho and Family
George Ingram
Inmet Mining Corporation
Interior Finishing Systems Training Centre
International Union of Operating Engineers Local 793
Ira Schneider Memorial Cancer Foundation
Jack Weinbaum Family Foundation
Janet D. Cottrelle Foundation

Jesse & Julie Rasch Foundation
Joint Department of Medical Imaging- Radiologists
In Honour of Melissa Ann Katzman
Paul Kennaley
James S. Kinnear
Neville and Lorraine Kirchmann
La Fondation Emmanuelle Gattuso
Stephan and Sophie Lewar
The Lewitt Family Foundation
Lilly
Longo's Family Charitable Foundation
Jon and Nancy Love
Mary Susan MacDonald
John and Gail MacNaughton
Tak W. Mak
Maple Leaf Foods Inc.
George E. Mara
The Mariano Elia Foundation
The Matthews Family
Margaret and Wallace McCain
Merck Canada Inc.
Olive Metcalfe
The Michael Young Family Foundation
The Nadir and Shabin Mohamed Foundation
The Norman and Marian Robertson Charitable Foundation
No recognition required as per 2020 agreements
Ron Oberlander
Murray and Judith O'Neil
Janssen Inc.
OSI Pharmaceuticals Foundation, Inc.
Pancreatic Cancer Canada Foundation
In Honour of Joan Parkes
Peter Gilgan Foundation
Pfizer Canada Inc.
The Posluns Family
The Princess Margaret - Volunteer Resources
R. Howard Webster Foundation
Recipe Unlimited
Nita and Don Reed
Edward and Margaret Riley
RioCan REIT
Family and Friends of Toby Robins
Roche
The Rosen Family
S.O. Asher Consultants Ltd.
Sanofi
Scotiabank
David Shapiro
Etta and Shiri (Shri) Shastri
Shoppers Drug Mart
Lana Sniderman
The Strobele Family
Kevin M. Sullivan and Family
Kazimiera Supczak
Joey and Toby Tanenbaum

Tauba & Solomon Spiro Family Foundation
The Tawse Family Charitable Foundation
Joan and Ken Taylor
TD Bank Group
J.W. Nevil Thomas and Family
Edward G. Thompson and Family
Fredric and Vicki Tomczyk
Gordon Tozer
Tony and Wendy Traub
University of Toronto Alumni Association
Varian Medical Systems
The WB Family Foundation
The Westaway Charitable Foundation
Judy Winberg and Andy Pollack
Gordon Wittrock
Yamana Gold Inc.

CHAMPION
\$500,000-\$999,999

ABC Group Inc.
Alamos Gold Inc.
Alivewell Limited
Mark and May Allison
Keith Ambachtsheer and Virginia Atkin
Douglas and Elsie Andrew
Lucio and Angela Angelucci
Bram and Bluma Appel
Family and Friends of Paolo Ardizzi
Jack and Patricia Barclay
Karen and Bill Barnett
Marvin and Linda Barnett
Barrick Gold Corporation
Bayer HealthCare
Ben and Hilda Katz Charitable Foundation
The Bennett Family Foundation
Niki Bledin
Boston Pizza International
In Honour of Donald E. Boxer
Bristol-Myers Squibb Canada
Barrie Rose and Family
Allan and Lisa Brown, Richard and Laurie Lederman
Bryant Family
The Cadillac Fairview Corporation
Denys Calvin and Nina Rapoport
Bryon Critchell Reburn Beal Campbell
Canadian Breast Cancer Foundation - Ontario Chapter
Cancer Care Ontario
Walter Ciona
Edna M. R. Clark
David and Lynn Coriat
Arthur Cushing
Division of Medical Oncology and Hematology - Princess Margaret Cancer Centre

Joseph Neil Monteith Dunsmore
 Charles Edmonds
 Tom and Karen Ehrlich and Family
 Honouring Stella Ruth and Zas Feitelson
 Jim and Margaret Fleck
 George Gajdos
 The Geoffrey H. Wood Foundation
 George and Helen Vari Foundation
 Goldcorp Inc.
 Andrew and Aviva Goldenberg
 Kathleen and James Gowans
 Great-West Life
 Heather and Ross Hamlin
 David Hedley
 The Henry White Kinnear Foundation
 Andrew Hoffman and Leslie Giller and Family
 IAMGOLD Corporation
 Imperial Oil Foundation
 International Association of Heat and Frost Insulators and Allied Workers, Local 95
 Ipsen Biopharmaceuticals Canada Inc.
 Irving Tissue
 Arnold and Lynn Irwin
 The Jane and Tom Sabourin Family Foundation
 Jose and Alexandra Jardino
 Sylvia Jaychuk
 Elspeth Aileen Abbey Johnson
 Joint Department of Medical Imaging - Radiologists
 Betty Mendelssohn Kalmanasch
 Naser Khan
 Kidney Cancer Research Network of Canada
 Kinross Gold Corporation
 Gerald and Paula Kirsh and Family
 KPMG Foundation
 The Kresge Foundation
 Helena H. Lam
 John and Linda Lamacraft
 Richard and Laurie Lederman and Family
 David and Anne LeGresley
 The Lillian Meighen and Don Wright Foundation
 Linda Frum & Howard Sokolowski Charitable Foundation
 Longo Brothers Fruit Markets Inc.
 Macquarie Group Foundation Ltd.
 Manulife Financial
 Marjorie Allan Foundation
 Master Insulators' Association of Ontario Inc.
 J. Scott McCain
 Martha LA McCain
 McCarthy Tetrault Foundation
 Jim Meekison and Carolyn Keystone

Merrill Lynch Canada Inc.
 Wanda Mikonis
 Municipality of Metro Toronto
 W. Patrick J. Neal and Deanna I. Neal
 Norm and Laura Lamarche Family Foundation
 Robert and Robin Ogilvie
 Patrick Hodgson Family Foundation
 Rhonda and Mel Pearl
 PreMD Inc.
 Roy William Pullen
 R. Samuel McLaughlin Foundation
 Rexall
 June Kathleen Ridley
 Lionel and Helaine Robins
 Josephine Luella Rogers
 Anna Rolling
 Elzbieta Rosnowska-Perera and Norbert Perera
 Maneck Sanjana
 Ruth Lynne Schacter
 Frederick John Schoeck
 James H. (Bert) Scott
 David and Martha Shaw
 Apotex Foundation - Honey and Barry Sherman
 Shiu Pong Group of Companies
 Gary and Donna Slight
 Gerald and Marion Soloway
 Stevens Family
 Paul and Doreen Sudolski
 Suzy's Inc.
 Ian Tannock
 Teck Resources Limited
 Ian Telfer and Nancy Burke
 TELUS
 Philip Torno
 Toronto Firefighters Association
 In Honour of Betty Florence Turnbull
 The W. Garfield Weston Foundation
 Stuart and Esther Waugh
 Richard Wernham and Julia West
 Lawrence William Wert
 Robert Charles Williams
 Geoff Wilson and Joanne Poulin
 Betsy Wright
 Y.M. Inc. Charitable Foundation

INNOVATOR \$250,000-\$499,999

A.W.B. Charitable Foundation
 Clive and Barbara Allen
 Hazel May Arnold
 The Asaro Family
 Pamela and Paul Austin
 Margaret and John Bahen
 The Barnes Family Charitable Foundation
 C.W. Barootes
 Thomas J. and Sonja Bata

William Bauman
 Bell Canada
 Joseph Henri Boucher
 Peter and Judith Bowie
 Geoffrey Allan Boyes
 Brampton Brick
 Jamie and Leah Bras & Family
 The Bresler Family
 Brookfield Partners Foundation
 The Buchan Family Foundation
 Canadian Pacific Charitable Foundation
 Cancer Research Society
 Gloria Veronica Maria Pasquale Cann
 Canso Investment Counsel Ltd.
 The Carolyn Sifton Foundation
 CGI
 In Honour of Jim Chamberlain
 Charles and Marilyn Gold Family Foundation
 Ellen Clare
 Maria and Terry Collier
 Barry and Sue Cooper
 Eve and Harold Corrigan
 Irene Crowe
 Davies, Ward, Phillips & Vineberg Foundation
 Gladys M. Davis
 Anne Margaret Delicaet
 Domenic and Bernisea Dell'Elce
 Lionel & Winsome deMercado
 Dental Associates - The Princess Margaret
 Corinne Shirley Deverell
 Ian and Anne Devine
 Victor Di Carlo
 William Lionel Dick
 Eric and Heather Donnelly
 Dylex Limited
 The Eaton Foundation
 James Edmondson
 Anna Engel and Family
 Ernst & Young LLP
 Shirley Pond Estey
 Denis Evans and Roy Steed
 Faith of Life Network
 Ivana Amato Farrar
 Fell Family
 Elizabeth B. Ferguson
 Isobel Findley
 Kristiina Fiorino, In Honour of Cecilia Fiorino
 Astrid H. Flaska
 Fondazione CRUP - Cassa Di Risparmio Udine - Pordenone
 Friends For Life
 Mavis Gardiner
 General Motors of Canada Limited
 Mohamad B. Ghadaki and Family
 Max Murray Glassman

GlaxoSmithKline
 Gluckstein Design Planning Inc.
 Lei-beng Goh
 Michael and Libby Goldgrub
 Pearl Goodman
 Goodmans LLP
 Senator Jerry and Carole Grafstein
 Grafton Apparel
 Hon. Bill Graham
 The Grand Chapter of Royal Arch Masons of Canada
 Shirley Granovsky
 Green Shield Canada Foundation
 Patricia Bernadette Greene
 Cathy Hale
 Koji and Mizue Handa
 Charles Hantho Family
 In Honour of Walter Harhay - Annette, Christopher and Katherine Harhay
 The Harold E. Ballard Foundation
 Harrison McCain Foundation
 Honda Canada Inc.
 HSBC Bank Canada
 Hudson's Bay Company
 Jennie Huie
 Patrick Hung and Family
 Immunex Corporation
 Inco Limited
 Eric and Candace Innes
 Ira Gluskin & Maxine Granovsky
 Gluskin Charitable Foundation
 Henry Irving and Florence Isabel Montgomery
 J.P. Bickell Foundation
 The Jarislowsky Foundation
 The Joe Di Palma Brain Tumor Pediatrics Foundation
 The John Labatt Foundation
 Joseph H.M. Wood Foundation
 George Kalmar and Family
 The Karen Green Charitable Trust
 In Honour of David W. Harrold - Maija Karppa
 In Honour of Ramona Rull Karson
 Katz Group Canada Ltd. - Rexall
 Judith and Stephen Kauffman
 Farsad Kiani
 Kodak Canada Employee Trust Fund
 Monty and Isabella Koffman
 Nellie Koleff
 Christina Kramer
 Mary Irene Hazel Langford
 Joyce E. Larkin
 James and Moira Lawrence
 James Grant LeBlanc
 Vincent William Lee
 Charles LeGresley
 The Leukemia and Lymphoma Society of Canada
 Lynda Levick

Our Donors

The Lewin and Moscarello Families
Local 67 - United Association of
Journeymen & Apprentices
Sheila and Sydney Loftus and Family
Johannes Petrus Loggen
In Honour of Chaim and Aliza Lustig
Sheila MacFeeters
Sandy and Bart MacDougall
M. Ann MacMillian
The Madeleine Venn-Mitchell and
Grace Venn-Mitchell Ovarian Cancer
Research Fund
Stacey Madge and Jeff Willner
Magna International Inc.
Marant Construction Limited
Malanie Maria Szchott Mason
Max Bell Foundation
Andrew and Barbara McIntyre
McMaster University
Marion H. McRobert
Mechanical Contractors Association
Ontario
Michael and Kelly Meighen
Helen Eileen Meredith
Lazo Mikijelj
Gloria Lorraine Mitchell
Molson Coors
John Edward Montgomery
Karen and Paul Morton
Jim Mourgelas
Patrick Muldoon
National Bank Financial
Nelson Arthur Hyland Foundation
Noble Trade
Eleanor L. O'Neill
Ontario Financial Services
Ontario Pipe Trades Council
Osler, Hoskin & Harcourt LLP
Irma Papesh
James Chiorotas Pappas
Paypal Giving Fund Canada
PCMnow.com Inc.
The Philip Smith Foundation
Pilkington-Henniger Charitable Trust
Jane Poulson
Prostate Cancer Canada
Michael A. Psaki
Fred and Catherine Purvis
Randstand Foundation
Wayne Robbins and Family
Pamela Ann Roberts
Rogers Group of Companies
Avie and Fonda Roth
Rosen/Jackson Charitable Fund
Phillip Rubinoff
Sauder Industries Limited
Hubert B. Sceats
The Schneider Family Foundation
Sears Canada Employees Charitable
Fund
Robert H. Sheard
Antonio Sicilia
Silverberg/Appleby Family
Sinai Health Foundation
Sam Sivitz
Greg and Diane Slaight
Nikola Stanacev
Morag L. Stewart
John William Stone
Sun Life Financial

Eva and Gabor Szekely
Anne Tanenbaum
Allan and Shirley Taylor
The Tecolote Foundation
Jochen Tilk and Denise Belman
In Honour of Bernard Tishman
Torys LLP Barristers & Solicitors
Toshiba of Canada Ltd.
Trade Secrets
Pat Nichols and Bob Tundermann
Under Armour Canada ULC
United Association of Plumbing and
Pipe Fitting Local 46
Universal Workers Union Local 183
Germaine Maria Van Overloop
George and Kathleen Vice
Natalie Lucy Vince
Joseph Vitale and Daniela Botto-Vitale
Thomas William Walker
Walmart Canada Corp.
We Love You Connie Foundation-
Guglietti Family
Norine D. Weller
Vera Wheatley-McDermott
Robert Elliot and Paul Wilson
J. Orton Wocker
Worb Family Foundation
Hazel Eleanor Wright
Harold E. Yeo
Ralph Zarboni
Helen Orma Zinkargue

LEADER

\$100,000-\$249,999

1234512 Ontario Inc.
James Henry Abbey
Leonard and Marcy Abramsky
Vernon Achber and Philip B. Lind
Acier Wirth Steel
Mollie Adamson
Adlib Software
David and Sharon Aello
Afexa Life Sciences Inc.
AGF Management Limited
Joseph and Morena Agueci
Ruth Mary Aitken
Alcan Aluminum Ltd.
Alectra Utilities
The Alofs Family
American Cyanamid Company
Amersham Health Inc.
Ampere Limited
From the Appel Family in Honour of
Bram and Bluma
Jim Archer-Shee and Mary Matthews
Atlantic Packaging Products Ltd.
A. Charles Baillie
Hugh Balders
BAMDC Inc.
Howard L. Banting
BAPS Charities Inc.
BASF
Margaret Glasgow Baxter
John Baycroft
Stephen and Dianne Bear
W. Geoffrey Beattie
Elizabeth Anne Beaudin
Bob and Diann Bell
Bellville Rodair International
BGIS

Rohit Bhapkar and Jaswinder Salh
BHP Billiton Plc
Martha Billes
Herb and Fran Binder and Family
Rudy and Lena Biskup
The Black Family Foundation
Blake, Cassels & Graydon LLP
Cindy Blakely and Robert Blakely
Marie Blazic
BLJC
Phil and Dortha Bloom
BloombergSen Investment Partners
Eugene Boccia
Borden Ladner Gervais
In Honour of Ann Borooah
Bothwell Accurate Co. Inc.
Jane Botsford
John and Susan Bowey
Bill and Eileen Brennan
Eric Bresler & Judy Klarman
The Brides' Project
Brookfield Asset Management Inc.
Brookfield Global Integrated Solutions
Philip Browman and Family
James Bryers Brown
Betty Ruth Brown
John Judson Bucknam
Helen C. Burdett
Burgundy Asset Management Ltd.
In Recognition of Ruth Burnett From
Joseph, Gail, Lorne and Sheldon
Burnett
Colleen Campbell and Stuart
MacGregor
Canadian National Christian
Foundation
Canadian Partnership Against Cancer
Corp.
Canadian Tire Corporation, Limited
Canary Foundation
Carpenters Union
Cardano Risk Management B.V.
Sandra Carlton
Gary Birchmore Carter
Barbara Lee MacFadyen Cartwright
Casselman Family
John G. Cassils
Catherine and Maxwell Meighen
Foundation
Centre Hospitalier De L'Universite De
Montreal
Bob Chan
Cheong Chu Chan
Eleanor Gladys Chapman
Charities Aid Foundation America
Alexander and Saralee Christ
Citipark Inc., Carole and Bernard
Zucker and Family, Wendy and Elliott
Eisen and Family
Ellen Clare
Shirley Ruth Clark
Elizabeth Clemence
Manuel Clementino
Clench House Foundation
Coalition to Cure Prostate Cancer
Coca-Cola Bottling Company
The Cochrane Family Foundation In
Honour of Dr. Jaime Escallon
Coffee Time (2015) Corp.
Steven Cohen

Maurice and Kumari Colson
Con-Drain Company (1983) Ltd.
Mary C. Conway
Gail and Irving Cooper
Sydney and Florence Cooper and
Family
Coppa's Fresh Market
Cormack Securities Inc.
Betty Cragg
Caroline Anne Crandall
Elizabeth Crawford
Credit Suisse and the Credit Suisse
Americas Foundation
William G. Crerar In Honour of Susan
E. Crerar
Lyla Ada Crossley
Faith and Noel Croxon
CTVglobemedia Inc.
Jeff and Carolyn Cullen
Dani and Erica Reiss Family
Foundation
Danier Leather Inc.
Miriam David
John M. Davison
Ruth Day
Romeo DeGasperis - Lymphoma
Canada
Rosemary Rita Deleo
In Honour of Teresa, Robert and Elsie
Agnes Demers
June Dewar
Robert J. Deyell Family
John Di Poce
Division of Thoracic Surgery, Princess
Margaret Cancer Centre/UHN
David and Arlene Dougall
Mabel Pearl Downer
Dr. Jay Charitable Foundation
William and Dorothy Drevnig and
Family
Marlene Drutz
Elizabeth O. Duke
Henrietta Duncan
Ronald James Dunn
Dupont Canada Inc.
Joseph James Duxbury
Dynamic Mutual Funds
E. and G. Odette Charitable
Foundation
Ed Mirvish Enterprises Ltd.
E.S. Fox Limited
Audrey Edwardine Eaton and Family
The Edper Group Limited
Ken and Susan Edwards, Megan
Edwards, John and Jennifer Cranfield
Joan and Hy Eiley
Eisai Limited
Ivan Elkan
Ellis-Don Limited
David and Judy Engel
Wilfred M. Estey
In Honour of John F. Rawn - Gareth W.
Evans
Exact Imaging
Falconbridge Limited
Agnes Faraci
Fasken Martineau DuMoulin LLP
Joseph Vincent Febbo
David and Angela Feldman
Goldie Feldman

David and Gwendolyn Ferguson	Margaret Janet Hamilton Howitt	Mary Lenore Mackie	Pamela and Desmond O'Rorke
Irene Helen Feuer	Margaret Joan Howlett	Adrienne and Douglas Mahaffy	Thomas and Muriel Oliver
Fidelity Investments Canada	James Lloyd Hudson	Karen and David Maidment	Onex
Fiera Foods Company	Glenda Hummel - May we cure cancer in our lifetime	Marco Mancini Family Foundation	Ontario Power Generation Employees' & Pensioners' Charity
Firefighters Against Cancer's Existence Foundation	IBEW Construction Council of Ontario	Emile Marino	Onyx Pharmaceuticals Inc.
Eva Flinders	Norman Andrew Mac Ilvridle	In Honour of Ben and Sylvia Marks	Oshawa Group/Pharma Plus
Ford Motor Co. of Canada, Ltd.	Industrial Alliance	The Marmilwood Family Trust	Gladys F. Marsh
Archibald J. Forsyth	International Association of Heat and Frost Insulators and Asbestos Workers	Chris G. Paliare and Eva Marszewski	Marie J. Overweel
Roy Foss	International Association for Healthcare Security & Safety	Anne Marie Therese Martin	Galina Ozols
Wayne and Isabel Fox	Andrew and Stephanie Irvine	Christopher and Deborah Martin	Ozz Electric Inc.
Family of Elizabeth M. Francis	Rita Ann Irwin	Masters Insurance Ltd.	Paladin Labs Inc.
John Douglas Franks	Robert, Janet and James Isaac	Mattamy Homes Ltd.	Ruth and Irving Papoff
Fraser Mackenzie Ltd.	Ivanhoe Cambridge Inc.	Elvira Maybee	Parrish & Heimbecker Ltd.
Freedom International Brokerage Inc.	Katherine and Glenn Ives	Duncan and Lois McArthur	David Pauli
Michael Freid	Esther and Jack Cole and Family	Eleanor McCain	Mary Pawlyk and George Onyschuk
Harvey and Helen Fruitman	Jack and Buschie Kamin Foundation	Joseph Neville McCarthy	Pediatric Oncology Group of Ontario (POGO)
G.A. Paper International Inc.	Jacqueline Seroussi Foundation	Helen L. McCartney	Ruth Pedley
Emilio and Yola Gambin	James J. Hammond Fund	McCarty Cancer Foundation	Pelmorex Media Inc.
Ganz Family Foundation	The James & Patricia Bullock Family Foundation	Joyce McCathie	Joan Pemberton
Lloyd David Gareh	Jancor Developments Inc.	Family of Marion Margaret McCormick	Charles Petersen and Riki Turofsky
Gary Bluestein Charitable Foundation	JBS Foundation Inc.	Sheila and David McCracken	Petro-Canada
GE Canada	Jilla and Robert Williams Foundation	Thomas and Jean McCulloch	Pfaff Automotive Partners Inc.
William Thomas Geddes	The Jo-Ann Cooke Family Foundation	McDonald's Restaurants of Canada Ltd.	The Pickle Barrel
Sorin Georgescu	Joe Finley Family Foundation	Bruce and Janet McKelvey	Donald William John Pierce
Gerry and Caren Ruby Family Foundation	Jon and Nancy Love Fund	McKinsey & Company	Elma P. Pinder
The Gesualdi Family	Elspeth Johnson	Elizabeth Margaret McLean	Pizza Pizza
F. Douglas Gibson	Edith Alice Johnston	Ken A. McLean	Placer Dome Inc.
Haley and Kosty Gilis	Jonathon D. Fischer Foundation	Norma Jean McLean	PM Fine Cabinetry Inc.
Majorie Ginsberg	Nizar and Gulzar Kanji	John Clark McMillan	The Polar Foundation
GlencoreXstrata	Marty Kelman and Gilda Tanz	MDS Inc.	Janet Polivy-Herman
Gerald and Naomi Goldenberg	Khodkar Investments Inc.	Mechanical Contractors Association of Toronto	Bonnie and Don Poole
Leo and Sala Goldhar	Warren and Debbie Kimel	Rikki Meggeson	Bruce Power
Goldman, Sachs & Co.	Klick Communications Inc.	Randy Mellon	Margaret S. Preston
David and Bonnie Goldstein	Michael M. Koerner	James Kyle Mellor	PricewaterhouseCoopers LLP - Metro Toronto North
Susan Gordon	John and Margaret Krall	June Anne and David Melnik	Primero Mining Corp.
Warren and Barbara Gorgan	Jean Kramar	Murray and Pauline Menkes	Andrew and Valerie Pringle
Victor Kelman Grant	Mary Kumthyr	The Menkes Family	Bernice Elizabeth and Allan Ross Profit
Great Gulf Homes, First Gulf Corp. & Tucker Hi-Rise	Morris and Marcia Kwinter and Family	MFS Investment Managment	The Prostate Cancer Fight Foundation
Anthony Green	Thomas Kwok	Garton Stuart Miller	Carolyn Prue and Paul Starita
Barry and Laurie Green Family Charitable Trust	Arthur and Maggie Lai	Marlene Miller	Elizabeth H. Quemby
Al and Malka Green	Lara Anne Hudson Foundation	Charles Franklin Miller and Donna Marie Piper Miller	David and Janice Radtke
Stewart and Jean Green	Laurel Steel	Harley Mintz	Odaria Radysz
Alan Greenberg	Helen Maureen Leah	David Moore	Edward Norman Ratcliffe
Gulshan & Pyarali G. Nanji Family Foundation	John and Jocelyn Lecluse	Stephen Morson	Raymond James Canada Foundation
Richard N. Gundy	Harold Lederman and Family	Mortgage Alliance	Ernest Redelmeier Family
James Gutmann	Micki Leger-Simpson	Ingrid Katharina Mueller	Juta Reed
Katerina Haka-Ikse	Robert Leonidas	Sanjib and Bharati Mukherjee	Janet Clyde Reid
Joe and Samar Hamadi	Leslie Elgin Developments Inc.	Mulvihill Capital Management Inc.	Edith Margaret Reid-Weston
Daniel John Hanowski	Stephen Letwin	Blanche B. Murray	Residential and Civil Construction Alliance Of Ontario
Frank Hardy	In Honour of Elysa Lipson	Nathan and Lily Silver Family Foundation	Hartley and Heather Richardson
Edwin J. Hart	Harry Littler	National Breast Cancer Fund	Ab, Jackie and Ethel Richmond
Ken and Linda Hartwick	In Honour of Lai Chun Liu	The National Basketball Association	Gwendolyn H. Riding
Harvey Kalles Real Estate Ltd.	The Lawrence and Judith Tanenbaum Family Foundation	Mildred Neilly	Robin and Barry Picov Family Foundation
Haynes Connell Foundation	Loblaw Companies Ltd.	New Gold Inc.	Ken Robins
The Herbert & Henrietta Charfoos Philanthropic Fund	Esther and John Loewen Family	Next Plumbing & Hydronics Supply Inc.	Joseph Jean Louis Jacques Rodrigue
Mildred Herzog	C. Donald Logan	James and Christine Nicol	Clayton Lloyd Rogers
Joan R. Hickey	London Life Insurance Company	Lois Nightingale	Jack and Judith Rose
Helen Mallovy Hicks	Wendy Long-Davies	Michael, Ryan, and Danielle Nisker	Pam and Ian Rosmarin and Family
Pauline Hicks	Murray L. Nicholson, in Honour of Audrey M. Nye-Nicholson	Gordon and Janet Nixon	Helen Lenore Roszell
Jacqueline Ford and Geoffrey Hinton	Elizabeth Ann Macaulay	The Norman and Margaret Jewison Charitable Foundation	Reeta Roy
Tim and Lana Hockey	Sandy and Bart MacDougall	The Northpine Foundation	The Royal College of Physicians and Surgeons of Canada
Egon Homburger and Lucie Tuch Homburger	In Honour of William and Bettie MacLaren	Nuyten Dime Foundation	Royal de Versailles Jewellers
Patricia Hosack		Geoffrey and Dawn Ogram	RSM Richter
		Brian O'Keefe	Jeffrey Rubenstein

Our Donors

Hana Rubins	Ted and Laura Tubbs	Aspen Ridge Holdings Inc.	Foundation
The Rudolf P. Bratty Family Charitable Foundation	Violet Annette Turley	Assante Wealth Management	Cancer Assistance Services, Halton Hills
Ruth and Irving Levine Family Foundation	George and Mary Turnbull and Family	Paul Atkinson	Canaccord Genuity
Ruth Ruttan	Turner Fleischer Architects Inc.	ATS Automation Tooling Systems Inc.	Joseph Carelli
S. Schulich Foundation	UBS Securities Canada Inc.	Pamela and Paul Austin	The Carol Sheriff Foundation
Sage Investments Ltd.	UHN Division of General Surgery	George Andrew Awde	Carole Herman Zucker Family Fund
Norma Kathleen Sanderson	Vince and Joanna Verduci	B & David Industrial	Carpenters District Council of Ontario
Cookie and Stephen Sandler	Peter von Schilling and Joanne Gauthier	The B.I. Ghert Family Foundation	Dorothy M. Carr
In Honour of Mary Scalzo-Dri	Robert & Wanda Wagner	Audrey Babb and Walter Maves	Barbara Marjorie Carson
Rudolph Schaffler	Hugh Walker	Norman Bailey	Fraser Milner Casgrain
Edna Mary Schroeder	Isobel Walker	Bailey Metal Products Ltd.	John & Mary Cassaday
Alan Schwarz	Peter and Holly Walsh	E.V.Baine	Cassels Brock & Blackwell LLP
The Seagram Company Ltd.	Elizabeth M. Walter	Mary Ellen Baker	In Honour of W. Manson Catterson
Victor Secrett	Bert Wasmund	Baker Real Estate Inc.	Charles Catton
Seniority Investments Limited	Albert G. Watson	Raff and Frank Baldesarra	Joan Cavanagh
Seyco Operations Ltd.	Waugh Family Foundation	Bank of America Merrill Lynch	CCTFA/Look Good Feel Better
Jyotsna and Rajendra Shah	James William Webb	Bank of Cyprus - Chain of Life	CGC Inc.
The Sheldon Inwentash and Lynn Factor Charitable Foundation	Beth Weingarden and Paul Stein	Frank Barassi	CGOV Foundation
Stanley and Donna Shenkman	Larry Weir	Barclays Capital Canada Inc.	CGU Insurance Company of Canada
Sherry and Sean Bourne Family Charitable Foundation	Wheaton Precious Metals	Barenaked Ladies	In Honour of Jim Chamberlain
Shorcan Brokers Ltd., TSX Group	Robin and Barbara White	Joseph Sam Barrese	Larry Chapman and Cassie Connolly
Naju B. Shroff	Michael Williams	Family of Matthew W. Barrett	Mary Chapman
Sick Kids Charitable Fund	Elliott and Mimi Wilson	Robert and Francine Barrett	Charities Aid Foundation of Canada
Cynthia and Douglas Skrepnek	Florence Kathleen Wilson	John and Betty Barrons	Loi Shun Charn
Paul and Carol Slavens	Herbert Allan Wilson	The Basian Family	William and Inge Christie
Harry Reginald Smith	Michael and Shari Wilson	Douglas Bassett	CI Investments
Stuart and Wendy Smith	Florence and Mickey Winberg	BDO Canada LLP	Clarington Mutual Funds
Evelyn Anna Lillian Soame	Edward E. Wise	Joceline Beaudry	W. Edmund Clark
SOBEK Investments Ltd.	The Woodbridge Company Ltd.	Stephen Belgue and Michelle Di Carlo	Larry Clarke
Soberman LLP Chartered Accountants	Chung Hwei Wu	Ian and Helen Berry	Deirdre Clement
Ed and Fran Sonshine	Family and Friends of Edie Yolles	Giovanni Bianchini	Clinical Research Malaysia
Sporting Life Inc.	Margaret Zavitz	Rochelle and Mike Biderman and Family In Honour of Frances and Ben Brock, Rose and Chuck Biderman	Tom Closson
Frank Squizzato	Dylan and Taylor Zivojinovich	Don and Pam Bierstock	Thomas Richard Cluff
Sean and Alex St. John	The Zuckerman Family	Joel Binder	Laura Anne Coates
Vineyard Holdings Inc.	PARTNER	Birchall Family Foundation at the Toronto Community Foundation	George and Susan Cohon
Starlight Investments Inc.	\$50,000-\$99,999	The Bitove Foundation	Col-Alt Builders Limited
Ronald S. Steinberg and Nancy Prusky	1572719 Ontario Inc.	Heather E. Black	Colio Estate Wines
The Steve and Sally Stavro Family Foundation	1598062 Ontario Inc.	Black & McDonald Ltd. Electrical & Mechanical Contractors	Magdalena Paulina Collins
In Honour of Ann Storfer	6172792 Canada Inc.	The BLG Foundation	Michael Colucci
Michael Storfer	912034 Alberta Limited	Alice Boccia	Vito Colucci
Jozef Straus	92491 Canada Ltd.	Ruth Bolt	Compaq Canada Inc.
Sugoi Performance Apparel	A & J Vacworx Inc.	Bomanite Toronto Ltd.	Con-Elco Ltd.
Roger and Marie Sutton	A.G. Simpson Automotive Inc.	Janet L. Bomza	Coopers & Lybrand
TACC Construction Ltd.	Abitibi-Consolidated Inc.	Bondfield Construction Company Ltd.	Joan and Frank Copping
T.G.H. Otolaryngology Research Group Inc.	Darren Ablett	Renee Botterbusch	Cott Corporation
Rose and Charles Tabachnick	Accenture	Meta Yvonne Bradwin	L.E. Cotterchio
Tanurb Developments Inc.	Sarah Evelyn Ackrow	Tanya and Paul Braun	Paul and Elvi Craig
Jadwiga Maria Taylor	ACXSYS Corporation	Roman Brenner	The Estelle Craig Family Trust
TerSera Canada Inc.	Violet Adair	The Bridle Bash Foundation	Cranbrook Glen Enterprises Limited
Tesari Charitable Foundation	Ronald J. Adams	Gail and Gary Brown & Family	Alfred Stanley Noble Creer
Teva Novopharm Ltd.	Adidas Canada Ltd.	Anne Marie Brownlee	Barbara Crispo
Adrian Thatcher	Agardy Glass & Aluminum Inc.	Cathy Buckingham and Denis Galbraith	Ava Weinberger Cross
THE QUILT: A Breast Cancer Support Project	Albion Glass Company Ltd.	Gladys Buckler and Family	Jean Cross
Grace Lorraine Thomas	Michael Alkis	Elisabeth Louise Burgess	Norman and Grace Cross
Tudor Thomas	Don and Elyse Allan	M. William and Dorothy Burke	Crown Life Insurance
Douglas Thompson	All-Connect Logistical Services Inc.	Michael F. Burke	Adele E. Curry
Tolin Enterprises Ltd.	Dave and Maureen Allen	Elizabeth Burridge	David and Stacey Cynamon
Toronto Star	Alli's Journey	Trevor Byrne	Fern Daiter
John and Liz Tory	Paula Almeida	C.I. Investments	Harry Daniel
Trimark Investment Mgt. Inc.	Rose Anderson	Caldwell Partners International Inc.	Raymond Danniels
Stella Trudgeon	Barry Appleby	Calsper Developments Inc.	Penella Davies
Gary Dell'Ernia and Ilias Tsilimigras	Ardis Archer	Canada Dry Motts Inc.	Davis & Henderson Ltd.
	Mavis Ardern	Canada Goose	Kenneth Charles Dawe
	Arista Homes	Canadian Council On Learning	Valerie Sharon Dawson
	John and Barbara Armstrong	Canadian Health Services Research	The Dawson Family Sharing Foundation
	Florence and Jack Arnold		Philip Deck and Kimberley Bozak
	Arthur Andersen		Garry and Patricia DeGeer
	Reginald Ash		Elvio Del Sorbo

Delavaco Inc.	Ron and Hedy Frisch	Pamela Mary Hosang	Charles and Janet Lin
Tom and Julia Della Maestra	Frito Lay Canada	Heather Howard	Lindwood Custom Homes
Delta Pi Sorority	Juliana and Johnny Fung	Robert Huse	Fei-Fei Liu
George and Katherine Dembroski	Anthony Fyles	Husky Food Importers & Distributors	Leslie and Sharon Llewellyn
Derek and Louise Dermott	Ann Gallie	John and Sydney Huxley	The Lloyd Carr-Harris Foundation
Desjardins Financial Securities and Investments	Dean Gangbar and Family	IBEW Toronto Local 353	Jana Lo
Detour Gold Foundation	Garmor Holdings Ltd.	Indigo Books & Music Inc.	Nancy Lockhart and Murray Frum
Michael and Julie Devine	Joanne Gauthier	Interlink Community Cancer Nurses	In Honour of Jack Lockwood
Mary and Jack Fekter	Genentech Inc.	The International Group Inc.	Audrey Loeb and David Ross
Peter Di Giuseppe	Garnet Orin Gibbins	Investors Group Financial Service Inc.	Alice Carrington Logan
Primo I. Di Luca	Gib-San Pools Ltd.	Jonathan Irish	Marjorie Logan
Dilawri Group of Companies	In Honour of Gilbert and Grace Goodman	The Isenberg Family Fund	Lombard Canada Ltd.
The Copland Family	Leroy Percy Gillard	Islington Golf Club Ladies Section	John A. Long
Diversified Business Communications - Canada	Marianne Girling	J. Armand Bombardier Foundation	L'Oreal Canada Inc.
Division of Ocular Oncology, Princess Margaret Cancer Centre	Caurie and Leonard Glickman	J.D.L. Development Limited	Loretta's Legacy Foundation
Dofasco Inc.	Myer Godfrey	Jack Link's Canada Company	A. Benson Lorriman
Perry Dolente	Sheila C. Goldenberg	Bonnie and Terry Jackson	Isabel Losch
Don Fry Scaffold Service Inc.	Hanna Goldman	Evelyn and Paul Jacobs	Louis Garneau Sports Inc.
Michael Dorfman	Jay and Jennifer Goldman	The Jain Family	LTP Sports Inc.
Joan and Ernie Dottori	Edwin A. Goodman	Mary Janigan and Thomas Kierans	For Donald Lunau
Cameron and Lynn Douglas and Family	Goodyear Canada Inc.	JE Fininvest Inc.	M.A.M. Group Inc.
Robin and Bill Downe	Mary Gospodarowicz	Herman Karlo O. Jensen	Mary and Garth MacGirr
Downsview Kitchens Ltd.	Gertrude Milrod Gotlib	Heldur Joe	Bruce and Paula Mackay
Downsview Plumbing Ltd.	Graham Munro Charitable Foundation	Colleen and Brian Johnston	Mackenzie Financial Corporation
Dr. Charles and Margaret Brown Foundation	Laura Kathleen Gray	John Johnstone	Ross MacKinnon
Dr. Jay Charitable Foundation	Bronislaw Grech	Joseph S. Stauffer Company Limited	J. Paul Malette
William and Dorothy Drevnig and Family	James Greenan	Kacharie Foundation	Leslie Mandelbaum
Duboc Family	Heather and Robert Grindley	Michael S. Kalles	Sylvia Mantella
David Dulberg	Elizabeth Groves	Kalmar Family Foundation	Pierre Marcoux
Dundee Corporation	GSO GF Acquisition B.C. Ltd.	Gary Kaplan and Rhonda Sheff	Rick Marshall
James and Lucette Dunlap	Brian Guenther	May and Fred Karp	William Desmond Martin
Paul and Teresa Dykeman	Jack and Judy Gwartz	F. Sharon Kates	Irene May Martin
Mildred Eady	H.G. Developments & Consultants Ltd.	E.S. Kaufman and Family	Irving and Esther Matlow
Lawrence Arthur William East	In Honour of Stella Hachey	The Kavelman-Fonn Foundation	Lloyd G. Matthews
Eastern Construction	Tracy A. Hackett	The Kay Family Charitable Foundation	Mauran Family
Economical Mutual Insurance Company	Ralph and Roz Halbert	Patrick B. Keeley	Kenneth and Sheila McArthur
Paolo D'Elia and Family	Hal Jackman Foundation	Mary Isabella Keemar	William McConnell
Ell-Rod Holdings Inc.	Helen E. Hall	James Kennedy	Thomas and Lynn McCulloch
EMD Serono Canada	Richard and Nancy Hamm	Beverley and Ed King and Family	Clarence and Mary McFall
Luise Enderle	Hugh Hanson	Joel Kirsh	Robert McFarland
Margaret E. English	Kathy Harder	Richard Knowles	James Hubert McLean
Epizyme Inc.	Mildred Harlock	Murray and Marvella Koffler	Norma McLean
Escada	The Harold Crabtree Foundation	George and Rachel Kostman	The McLean Foundation
Jim Estill	David and Melanie Harris	KRG Children's Charities	McMillan Binch
Exel Inc.	M. Marianne Harris	Gordon and Joyce Lackenbauer	Stella Donalda McNichol
The Faas Foundation	Patricia Harris	Ladies Out Laughing	Chris McPhee
Gail and Robert Farquharson	Robert Harrison	Ladies Auxiliary of the CIBPA	Ronald John Charles McQueen
Shane Feeney	Murray Hart and Jill Kamin	David Lahey	The Mendelson Family Foundation
Joseph Fehrenbach	Healthcare Materials Management Services (HMMS)	Laidlaw Inc.	Mercedes-Benz Financial Services Canada
Bernard Feinstein	Heat & Frost Insulators & Asbestos Workers Local 119	Shelina Lalji	
Fiera YMG Capital	Heavy Construction Association of Toronto	Tri Lam	Howard and Lois Michaels
Fire Services Credit Union	The Hebel Family Foundation	Judy and Bruce Langstaff	Lynn Miller and Louise Morwick
Susan and Ron Flam	The Heiberger Family	Jocelyne "Jo" Laniel	Milli Gould
Stephen Fleisher	George and Linda Heller	In Honour of Diane Lanthier	John Millyard
John Ferguson Flinn	Henry D. Hendershot	Normand Laperriere	Myles Mindham and Stephen Gilles
Michael Flood	Erna Henry	The Lawson Foundation	Frances and Clive Minto
Fondation Les Roses De L'Espoir	Jeffrey and Elizabeth Herold	Andrew LeFeuvre	Minto St. Inc.
Foresters Financials	High Vail Systems Inc.	Grant Leach	Sandy Minuk
Fornax Construction Inc.	High Impact Solutions	Esther Lee	Florence Minz, Daniel Geneen & Julian Geneen
Four Seasons Drywall	Naomi Himel and Ron Lustig	Johnny Lee	
Robert Francki	Roy Hints	Reva James Leeds	George Mitchell
George Frankfort	Timen P.Ho and Ling H. Ho-Lai	Micki Leger-Simpson	Bruce Miyashita
Peter L. Fraser	The Hogarth Family Foundation	Mary Legris (Legree)	Malcolm Moore
Sherri Freedman and Jeff Hoffman	Geoffrey Hole	Thomas George Leonard	Moore Wallace Inc.
	Holt Renfrew	The Leonard & Felicie Blatt Foundation	Moosehead Breweries Limited
	Donald Lewis Honey	Leon's Furniture Limited	Margery Moreland
		The Les and Minda Feldman Charitable Foundation	Morguard Corporation
		Lifelong Nutrition Inc.	The Morrison Foundation
		Lifford Wine Agency	Kathleen E. Morritt
			Mosaic Sales Solutions Canada

Our Donors

Operating Co. Motley Rice LLC Patricia and Thomas Muir The Multiple Myeloma Research Foundation Peter Murdoch Sheila Murray Patricia J. Myhal Wolf and Dora Naiman Joanne Nemeroff Nesbitt Family Norman J. Newell Susan Newman NHL Foundation Jon Nix Doris Noftall Philip and Joan Norris Lesley E. North J. Patricia Nowlan Nucap Industries Inc. Oakdale Golf and Country Club Ltd. Moira and John O'Bryan Ogilvy Renault Geoffrey Ogram Mary Olesky Shelagh and John O'Neill Ontario Acoustic Supply Inc. Ontario Association of Demolition Contractors Inc. Jeffrey Orr The Oshawa Golf Club Gordon P. Osler Gilles Ouellette Oxford Properties Steven and Shawna Page and Family Colleen and Christopher Paige Bernice and Charles Palef Joan Paliwoda Gerald Panneton Paradise Homes Corp. Paragon Protection Ltd. Parsons Behle & Latimer Bruce Patterson Eleanor and Laurence Pattillo Paul Flumian Grand Prix PCL Construction Canada Inc. Pearson Canada Social Committee Eleanor Martin Penman Pepsi Co. Foods Canada Inc. (Quaker Oats Canada) The Peter and Melanie Munk Charitable Foundation Peter Mielzynski Agencies Ltd. Reta May Pettet Philips Medical Systems Canada John and Andrea Pierson Pinchin Ltd. Jack and Connie Pires Pizza Nova Polar Asset Management Partners Pollock Family Foundation Katharine Joyce Pomanti Potash Corp. M. Hope Powell PowerStream Inc. Ian and Cathy Preston Prete Family Robert Prittie & Shirley Prittie Procter & Gamble Inc. Professional Warehouse	Demonstrations Province of Ontario Provincial Building & Construction Trades Council of Ontario Pusateri's Fine Foods PwC Canada Patricia Quigley William and Cynthia Quinn David Race Ann Rastin Ratech Electronics Ltd. In Honour of Frank A. Rago Sara Ratney Paul Reaburn Daniel Rees Kenneth George Reeve Florence Reilly Ronald Rein Research Capital Corporation Revlon Canada Inc. Rexdale Food Specialties Ltd. The Richard and Jean Ivey Fund Family, Friends and Colleagues of Christopher G. Riggs Alice Roberts Peter and Tina Rocca William Michael Roche The Roel C. Buck Family Foundation Rosa Roessle Michael Rolland Mario Romano Annie Ropar Family and Friends of Ethel Rosen Bruce Ross Richard Ross Roy Thompson Hall Royal & Sun Alliance Canada Adam Rubinoff Rubinoff Family Charitable Foundation Runner's Choice Promotions/RCP Int. Derek B. Russell Nancy Ruth Eamon Ryan Carol Rykert S & C Electric Canada Ltd. S.I.C. Holdings Inc. Marvin and Victoria Sadowski Mohit and Kathleen Sahni Salit Steel Danny Charles Salter Sam and Ida Ross Foundation Samsung Canada Samuelsohn Limited Family and Friends of Tito Sansalone John Sauders Sceptre Investment Counsel Ltd. Patricia Anne Schick Schick Canada Carol and Lionel Schipper Clare and Mark Schmehl Schneider Electric Canada Inc. Rolf Schoene Eva Anna Schutz Charles and Mina Schwarz Hazel Barr Scott Rohit Sehgal and Family Adam Shapiro David Shaw and Gary Miller Shaw Industries Ltd. Shawneeki Golf Club	Gerald Shear Shearman & Sterling LLP The Shen Family Charitable Foundation Sherritt International Corporation Owen Shime Alex Shnaider Michael and Jackie Shulman Yuen Che Sik Florence and Al Silver Mark and Catherine Silver Randi Silverstein Murray and Mary Sinclair Martin W. Skoczynski Slices for Smiles Foundation Jeremy Smith Jean Smith Teresa Mary Smith Linda Elizabeth Smithers Sam Sniderman and Janet Mays The Sobey Foundation Sobotec Ltd. Haydn Solomons and Family Harold and Mynne Soupcoff Spectrum Realty Services Inc. Stephen D. Sperling Spidertech Inc. Eric Sprott Wayne Squibb St. Joseph Family of Companies Foundation St. Lawrence Cement Inc. Len and Liz Stanmore Starlight Group Property Holdings Inc. Brian Aune In Honour of Brian Steck Donna Steck and Family In Honour of Our Beloved Husband and Father Brian Steck Stikeman Elliott Ian M. Stobart and Norma Stobart Strachans s.a. Elsa and Ted Stringer Suncor Energy Products Inc. Sunset Flora Builders Corp. SunSmart Melanoma Foundation Symcor Inc. T.S.X. Group Take Credit Pak Ming Louis Tam Tse King Yiu Tang TEKK Construction Group Ltd R.L. Temple Lilian Mary Eleanor Thomas Marie Ella Thompson Marjorie Thomson Thomson Reuters Ticketmaster Canada Tippet Foundation TMX Group Inc. Tomkin Gates Foundation Robert Torokvei The Toronto Crown & Bridge Study Club Toronto General Hospital - Pathology Association Tour East Group Trans Power Utility Contractors Inc. Transcanada Pipelines Trinity Development Foundation Trio Roofing Systems Inc.	Robert Turk and Julie Feldman Marcus Tzaferis U.A. Industry Enhancement UCC Press Harley Ulster and Cindy Leder Unifor Social Justice Fund Unilever Canada Limited United Association Valeant Canada Ltd. Valterra Landscape Contractors Inc Gino Vettoretto Vibro-Acoustics Visa Canada Association Michael Volpatti Vonality Ronald and Faye Wagner Carolyn Kent Waite Jared Waldron Elizabeth Joyce Walker Laurel Ward James A. Waters John H. Watson WAYFF Global Ltd. In Honour of the Wonderful Life of Percy Weinstein Seymour Weinstein Eric Weir Michael Wekerle Marion Jean Wellwood WEMJA Ltd. In Honour of Angela Werner and Wanda Harrison Weston Flooring Ltd. Eric Wetlaufer William White Whitecastle Investments Ltd. Clifford Whittall Lorne T. Wickerson and Rona Tattersdill Don and Sarah Wiersma Isabel Willigen Marjorie Laura Howard Wilson Shelagh E. Wilson Sylvia Winestock Gale and Jerold Winter Steven Wolfe Women's Ad Club of Toronto Dr. Frank Wong and Juliana S. Wong Ernest Wood Marjorie Wood Woodbine Entertainment Group Mari-Jayne Woodyatt Worts Lennox Smart Jindara Yang Yanovski Family Robert and Terry Yanowski Wenda Young Ermenegildo Zegna Zeidler Partnership Bardya Ziaian Bella Ziering-Lando Charles Zuckerman
--	---	--	--

BUILDER
\$25,000-\$49,999K
10139602 Canada Inc.
1393838 Ontario Limited
1546323 Ontario Inc.
1832 Asset Management L.P.
683731 Ontario Limited T/A Mach II

Press	Banjo Inc.	Broadridge Financial Solutions	Corporation
7347898 Canada Inc.	Lawrence Barakett	Charles R. Bronfman	Pei C. Chang
860686 Ontario Inc.	Beverly Barakett	Lesley and John Brough	William B. Chapman
A Cure For Life Group	Barberry Realty Corporation	Penny Brown	Kevin Charles
AA&A Diamonds	Barenaked Ladies	Beverley and Harold Brown, Faye and	Allan C. Chartrand
Alicia Abballe	Barrday	Herman (Sonny) Goldfarb	Eddy Chau
Hossein Abhary	Barricade Traffic Services Inc.	Violet, Sharon, and Janice Brown and	Dallas and Linda Cheevers
Accenture	Ron and Sharon Baruch	Brian Ravok	Jadela Sara Chen
Alfie and Anna Pierri	Tammy Baruch	William P., Gail and Billy Brown	David Chernos
Phyllis Ackerman	Bath & Body Works Canada	Brown Window Corporation	Chiovitti Banana Co. Ltd.
Pauline Adams	Baywood Homes	Browns Shoes Charitable Foundation	Chiros Care Foundation
Renee Addison	BBM Excavation Company Ltd.	Bruce Wilson Landscaping Ltd.	Chok-Chun Lau Family Charity
Dr. Miriam and Sheldon G. Adelson	BBS Securities Inc.	Andrew Buchan	Foundation
Medical Research Foundation	Beach and Associates Ltd.	The Buckingham Charitable	Chubb Insurance Company of Canada
ADP Canada	M. Kelly Beales	Foundation	CHUM Charitable Foundation
Advanced Agro Enterprises Limited	Paul Beaumont	William Buckley	Cinitel Realty Ltd
Advanced Care Technologies, Inc.	Beaver Valley Ski Club	Michael Buckstein	Citi Group, Unitrax Development
Aecon Construction & Materials Ltd.	James Thornton Begg	Miriam Bueno	Citibank Canada
Lorraine Ailles	Antonio Belas	Building Owners and Managers	City of Toronto
Aimia Inc.	Doug Bell	Association	Clarica Life Insurance Co.
Ajax Lions Club	Helen Isobell Bell	The Bulhoes Family	Ethyle I. Clark
Gino Alberelli	Ron Belluomini	Jane Burfield	John and Anne Clark
Alberga Family Charitable Fund	Gregory Belton	Constance Olga Bourdignon Burgess	Timothy Clark
Albert and Temmy Latner Family	G. Belz	Darlene Burnham	Judith and Kenneth Clarke
Foundation	Benefit Plan Administrators Ltd.	Joan Bush	Clarus Securities Inc.
Alexander E. Grossman Foundation	Jalynn H. Bennett	The Butcher Shoppe	James Claydon
J. A. Alexander	Barbara Benoliel	Buttonwood Real Estate	Rick Claydon
Algo Industries	Gay Berger	C.A. Delaney Capital Management Ltd.	John and Pattie Cleghorn and Family
Ammar Al-Joundi	Beverley Bernier	Cadillac Fairview Corporation Limited	The Clorox Company of Canada Ltd.
Mohammad Alkari	Coleman and Evelyn Bernstein	Mark Caiger	Sheila Clotworthy
Allan and Susan Fenwick Charitable	Lawrence Bertuzzi	Mary Calder	Clublink Corporation
Foundation	The Bess Morton Memorial Fund	Alice Cameron	James Charles Clutchey
Allangrove Investments Limited	Andrea Bezjak	The Family of Sandra Lillian Campbell	Cobmex (Canada) Inc.
Jan and Keith Allin	BFI Canada Inc.	Canada Group Inc.	Beverley and Sam Cohen and Family
Allseas Fisheries Inc.	Keki Bharucha	The Canada Life Assurance Company	Marshall and Judith Cohen
The Allstate Foundation of Canada	Diana Billes	Canadian Amyloidosis Support	Mitchell Cohen
Francis and Vivian Allwood	Birch Hill Equity Partners	Network Inc.	Dan Coholan
Amalfi Home Building Inc.	David Birkenshaw	Canadian Association of Medical	Ellen and Albert Cole
Jean Anderson	Jane Black	Oncologists	Collectiva Class Action Services Inc.
Merryl Anne Anderson	Ronald Henry Blackall	Canadian Hospital Specialties Ltd.	Earlaine Collins
Santina Andrighetti	Bliss Photography	Canadian Mesothelioma Foundation	Luciano and Paola Colozza
Anton Manufacturing	Ida Bloom	Canadian National	William E. Colwill
Aon Re Canada Inc.	Jack Bloom	Canadian Retinoblastoma Society	Combe Charitable Trust
AMPC Inc.	Michael Bloom	Canamould Extrusions Inc.	Combined Insurance Company of
Bunnie and Ronald Appleby	Paul Bloom	Canarm Ltd. J. Cooper	America
Aquicon Construction Co. Ltd.	Oliver Bock	Cancer Care Manitoba	Commercial Mechanical Services Ltd.
Roman Arbesman	Gordon J. Bogden	Gordon F. Canning	Completely Wired Corp.
Carolyn Archibald	Boiler Inspection & Insurance Co.	Cardano	ConAgra Charitable Trust
Carrie Amelia Arksey	Borges Foods Ltd.	Robert Carew	Leo H (Ted) Coneybeare
Arnold & Leona Finkler Family	Napoleonas Borisas	Jacqueline Carl	Confederation Freezers
Foundation	Robindra N. Bose	Michael Carnegie	Paul M. Conway
Arnett Family Trust	Ron Bouckley	Giovanna Carnevale	Marilyn E. Cook
The Arrell Family Foundation	Gary Bourgeois and Sheilah Wallin	Patrick and Marley Carroll	Cooltech Air Systems Ltd.
The ASCO Foundation	Patricia Bowles	Walter Carsen	The Co-operators General Insurance
Saiid Assefi	W. Melville Boyce	Mary Carson	Co.
Ronald William Atkinson	Walter Boyd	Carter Fund	Ellen Violet Cooper
The Atlas Corporation	Joan Helen Brahm	Casco Inc.	Gerald W. Cooper
The Audrey & Donald Campbell	Krishna Brahmachari	CatWalk Cure	Lorraine and Joel Cooper
Foundation	Brainchild Foundation	CBRE Limited	Marilyn Cooper
Automated Interiors Inc.	Brampar Building Supplies Ltd.	CCL Industries Inc.	Cooper Equipment Rentals
Autoplanet Group Inc.	Cindi K. Brand	Celestica Inc.	Tami and George Cope
Verna Aziz	Jason Brass	Central Fairbank Lumber	Cesidio Coppola
The B.A. Himel Family Foundation	Brenda Brazier	Centrecorp/North American	Family and Friends of Maxine Corbett
Cheryl Babcock	Robert Breadner	Development Group	- MAX-IMIZE
Shane Baghai	Albert Victor Brereton	Centura Tile	Louis Cordeiro
Jehan Bagli	Kathleen Bresnahan	Challenger Motor Freight Inc.	Core Oncology
Michael Baker	Brian Domelle Enterprises Ltd.	Wallace and Clarice Chalmers	Lois Cotterchio
Helen G. Balfour	James Brierley	Charlie and Irish Chan	Olga and Warner Cowan
Carol and Stan Banach	Mark Brillon	Vicky Mei Chun Chan	Helen V. Crawford
Diponkar Banerjee	George C. Britton	The Chandaria Family and Conros	Creaghan McConnell Group Ltd

Our Donors

Edie Creed	Rupert Duchesne	Abe and Marcy Fish	Goldfarb, Shulman, Patel & Co. LLP
Mary and John Crocker	Daniel Duggan	Dorothy P. Fisher	Goldman, Spring, Kichler & Sanders LLP
Norman C. Crook	Duncan and Michelle Sinclair Foundation	Fisher & Associates	C. Warren and Barbara Goldring
Ken Crystal and Lynn Posluns	Dundee Capital Markets	Shawn Fisher	Goldstein Financial Consultant
Culinary Destinations Ltd.	Steve R. Dunk	Violet Flawn	Joseph Goncalves
Elaine and Jack Culiner	David and Margriet Dunlap	Michael Flemming	Kim Gonneau
Deborah Cumming	Peter Dunlop	Wanda Fogarty	Goodman & Company
Bernard Cummings and Radiation Oncologists	Janet A. Dunn	Fogler, Rubinoff LLP	The Barry Gordon Family
Teri Currie	Durabond Products Ltd.	John and Linda Fogolin	David Gordon
Helen Marion Curry	Dural	Paula Fonseca	John Gordon
Mark and Ann Curry	C. Ian Durrell and Lynn A MacKay	Forma-Con Construction	Merritt Gordon
Marty Cutler	Dyversity Communications Inc.	Paul Fortin	Don Gorman
CVC Capital Partners	E*TRADE Canada Securities Corporation	Four Seasons Hotels and Resorts	Howard Gorman and Rachel Rafelman
Cycling Sports Group Canada	Earl O'Neil Electric Supply Ltd.	Cameron Fowler	Joseph Gorog
Joe Da Costa	Barbara Edwards	Fowler Construction Company Limited	William Gorsline
Dairy Farmers of Canada	Edwin and Charlotte Pivnick Family Foundation	Spencer Fox	Nevenka Gospodnetic
Mark Daitchman	Egon Zehnder International Inc.	Debra Fraleigh	Harriet Jean Gourley
Pearl and Dominic D'Alessandro	Jonathan and Johanna Ehrlich	Franklin Templeton Investments Corp.	Grace Graham
Don Dalicandro	Morton Eisen and Family in Honour of Gail	Ian Fraser	Harold Graham
Frederick Dalley	John Elder	Free Daily News Group	William and Gwendolyne Graham
Dama Construction	Elirpa Construction & Materials Limited	Harvey and Miriam Freedman	Eugene and Ivana Granieri
Daniel and Elizabeth Damov	Ann Elliott	Rosemary French	Trudy Grant
Daniel Hechter Paris	Jacqueline Elliott and Robert Peake	Chad Friesen and Maryann Ribbers	Andrew Nicholas Greatrex
David Daniels	EllisDon Corporation	Harvey Frisch	Cary and Ronda Green
David Cornfield Melanoma Fund	Emerald Foundation	Frozen Pond Inc.	Lindy C. Green
Peg Dawkins	Enterprise Canada Consultants	Larry and Eileen Fryer	Melanie Green
DBRS Limited	Susan Eplett	Fuller Landau LLP	Marion Greenberg
A. Victor De Jardine	E. Reginald Epps	Ross E. Fullerton	Roger Greenberg
Elvio De Meneghi	Alexander and Florence Epstein	Frank Fusillo	Murray Greenbloom
Peter Allan Deas	Erika Heller Foundation	Yves and Deidre Gadler and Family	Eileen Greene
Lori DeCecco	Peter Erlendson	James Gaiger	Daniel Greenglass
Garry and Patricia DeGeer	Erosion Control Gabions Ltd.	The Gail Boston Charitable Foundation	Pierre Greffe
Dell Canada Inc.	John and Catherine Estey	Gallery Specialty Hardware Inc.	Tibor P. Gregor
George and Carola Della Mattia	Paul and Brigitte Estey	George Gantcheff	Greystone Golf Club
Della Shore Investments Ltd.	Eton Canada Inc.	Gap Foundation Gift Matching Program	Annabella Blair Grieve
George and Katherine Dembroski	Eric and Judy Evans	Garage Living	In Honour of Rachile (Lialia) Griffith
Jill Denham and Stephen Marshall	Robert Evans	David Garofalo	Michael Griffiths
The Derick Brenninkmeyer Charitable Foundation	Denis and Janet Evans	Joseph Lorne Garvin	Groundlayer Capital Inc.
Desjardins Securities	Patricia Fagan	Gazzola Paving Ltd.	GS Battery- Canada
Deutsche Bank Securities Ltd.	Fairwater Capital Corporation	Gentile Contracting Ltd.	GTSWCA
Courtenay Dew	Fairweather	Gentle Ben Charity Challenge	Patricia and Frank Guenther
Joanne and Scott Dewar	Michael Faralla	Geo. A. Kelson Company Limited	Leo Guerin
Barbara Deyell	In Honour of Ruth Farb - the Farb and Koffman Families and Friends	The George and Kay Goldlist Foundation	Guild Electric Limited
Phillip & Peggy DeZwirek	Selle Farnham	Georgia-Pacific Gypsum	Terri Maida Guthrie
DFC Auto Group Inc.	Anne Fawcett	Georgian Partners	Dawn Haberman
Cindy Neesha Dhani	Russell Roy Ego and Helen Isabel (Bertram) Fawcett	Gerald Sheff & Shanitha Kachan Charitable Foundation	Anne Handelman and Family
Anthony Di Pierdomenico	Sandra Fecan	Michael Gerard	Robert Hagerman
Diamond Corp.	H. Lawrence and Beverley Fein	Gerdau	Mojgan Hajmoemania
Emanuel DiFalco	A. Feldman	GFL Infrastructure Group Inc.	Paul Herbert Halpern
Ronald Dilts	Mark Feldman and Alexandra Hoy	J. Patrick Gibson	Graeme Hamilton
Anthony DiPierdomenico	Fenig Management Limited	Judith Gibson	Hammerson Canada Inc.
Discount Car and Truck Rentals Ltd.	Ronald Ferguson	Gilead Sciences Canada, Inc.	Kathleen Hanly
Ross Dobbin	Fermar Paving Ltd.	Gillie and Norman Glowinsky	Jauna Charriere Hannesson
Brent Dobson	Fidelity Canada	Norman S. Godfrey	Alice Amelia Hardie
Doctors of Cancer Surgery, UHN	Albert and Reta Field	Hanson Goe and Vivian L. Goe-Wong	Kimberly Harle
Dole Foods of Canada Ltd.	Fieldgate Developments	Veneta Margrit Goebel	Paul Harper
Alison Domingues	Madeline Fielding	Lionel and Mary Goffart	Heather Harris
Merelyn Joan Dominico	George Fine		Leonard Harris
Dominion of Canada General Insurance Company	Pat Finelli		Helen Kathleen Harrop
The Dominion Group Foundation	David Fingold		Stacy Hart
Jane Donald	John R. Finlay		Hawker Siddeley Canada Inc.
Dorset Partners	Michael Firestone		David and Lenore Hawkey
Dov Zevy Fund	Donald Firth		Heather Heaps
Downsview Heating & Air Conditioning Ltd.			Cailey Heaps in Honour of Heather Heaps
In Honour of Barbara Doyle			Heather Leckie Bryant Memorial Fund
Drywall Local 675			The Heathwood Group Inc.
			Barbara Hebert
			G. R. Heffernan

Brian Hellyer	Lynne Jeffrey	Council	Mad Inc.
Barry Henderson	Michael A.S. Jewett	Morris Labovitch	Deborah Magidson
Evelyn Henderson McAndrew	The Jodamada Foundation	Alison Lachlan-Currie	Magna Closures Inc.
William James Henry	Joellor Holdings Inc.	Lakeview Homes	Geraldine Mahoney
John D. Heraud	The John McKellar Charitable Foundation	Lancorp Construction Co. Ltd.	Malfar Mechanical Inc.
Robert Herjavec	John Steinberg and Associates	Judith N. Langstaff	Murray Malkin
Gangolf Herman and Inge Dux-Herman	John W.S. Preston Charitable Foundation	Lanno Torelli LLP Chartered Accountants	Kathy Mance
W. Bernard Herman	Johns Manville Corporation	Larendale Homes Inc	Lee Ann Manchul
Grant Hern	Mavis Johnson	Fraser and Heather Latta	Seth Mandell
Janice and Allan Heyworth	Cameron Johnstone	Nancy and Frank Laurie	Theodore Manziaris
Highland Hotel Ltd.	Johnvince Foods	Laurier Homes (27) Ltd.	Maple Downs Golf & Country Club
Lawrence and Elyse Hildebrand	George Jordan	Scott Lawrence	Stephen Marano
Herbert Marshall Hill	The Joseph Frieberg Family Charitable Foundation	Mary Ann Lawrie	The Marilyn Van Stone Foundation
Thelma Hill, In Honour of Her Grandson, Jeffrey G.	J.P. Morgan Chase Foundation	Lawson Mardon Packaging Inc.	Luciano Marino
Ronald Jack Hill	JRP Citadel Inc.	Stuart and Victoria Lazier	Markham Executive Suites Inc.
Allen and Celia Hirsh	Eric and Eva Juhola	Leao D'Ouro Restaurante Bar	Jason Marks
William Holland	K.S. Hobbs Services Ltd.	Manuel Leder	Marli Mechanical Ltd.
Edward Holowchuk	The Kaitlan Group Ltd.	Edward Lee	Margo Marr
Home Instead Senior Care, Bruce Mahony	Ruth (Kamin) Chelin	Patricia Lee	Peter Marrone
The Home Depot Foundation	Harold and Norma Kamin	Professor Martin Lee	Marsh & McLennan Companies
Home Trust Company	In Honour of Joseph and Doris Kanner	In honour of Delena Legate Lemon	Paul Martin
Aaron Hong	Amirali Karimbhoy	Kevin Leon	Fernando Martins
Joan Hood	David Kassie	Leon's Insulation Inc.	Ewan Mason and Rosemary Drury
Fern and Irving Horowitz	Marvin Kates	David Leslie	Masonic Lodges in District No. 7
Marilyn Hosang	Katherine Newman Design	Wilfred Levin	Bharat Masrani
HUB International HKMB Limited	Kaufman and Sigel Families	Michael A. Levine and Family	Gloria Matias
Hudbay Minerals Inc.	Arie Kavelaar	Howard Levinoff	J. Matthews
Hugo Boss Canada Inc.	Louise S. Kawasaki	Karyn Levy	Vera Maughan
Jason Hultink	Jack and Pat Kay	Steven Levy	Maurice Joseph Weisfeld & Louis Weisfeld Charitable Fdn.
R. Neil Hunking	Judy Kealey	Donald Lewtas	Max and Tessie Zelikovitz Charitable Foundation
Shelley A. Hunt	David Keeley	Jules Lewy and Joanna Slone	Maxit Capital LP
Hunter Keilty Muntz & Beatty Ltd.	Elaine M. Kehoe	Stephanie Lheureaux	Maxum Drywall Inc.
Hurricane Voices Breast Cancer Foundation	Jay Kellerman	Liberty Development Corp.	James Mayne
ICICI Bank Canada	Kelson Family Foundation	Marilyn Libin	McAsphalt Industries Ltd.
Imedex Inc.	Herbert Kemp	Donald R. Lindsay	Eugene C. McBurney
Imperial Coffee & Services Inc.	Kenaidan Contracting Ltd.	Judy Linton	Diane McCabe
Glenna Ingold	Peter Kenny	Marcia Lipson	David McCann
Larry and Patricia Innanen	Kensington Healthcare	Litens Automotive Partnership	Daniel McCarthy
International Union of Painters & Allied Trades	Downsview Chrysler Dodge Jeep Fiat	Dorothy S. Little and Family	McCarthy Tetrault LLP
International Home Marketing Group Ltd.	Kernerman Arts Inc.	Liuna Local 506	Keith and Louise McCord
Interstate Freight Systems Inc.	Jennifer Kerr	Ronald S. Lloyd	David R. McCready
Intuitive Surgical Inc.	Nancy Kerr	Drywall Acoustic Lathing & Insulation Local 675	J. Douglas McCullough
Invar Building Corporation	Marjorie Mary Kerry	Anna Loh	Duane Allan McFarlane
Investors Group	Norman and Ellin Kert	Joe Lombard	McGill
Island Edge Inc.	Jack Keslassy	Anthony Longo	Jim McGovern
Munir Issa	Julie Khanna	Joey Longo	Thomas McGowan
Ivanhoe Cambridge Inc.	Sass Khazzam	William John Lourie	Sandy McIntosh
Darryl and Jan Iwai	KIK Custom Products	Kyle Loveless	Natasha Leighl and Harton McKay
Ken and Elaine Iwai	John Kim	LoyaltyOne	McKellar Structured Settlements
J.E. Panneton Family Foundation	Andrea, Carolyn and Christopher Kinch	Gerald Lozinski	Peter McKergow
The J.S. Trust	Kipling Group Inc.	Cory Luedtke	Daryl McLean
Jack Digital Productions Inc.	Kevin Kirby	Don Lunau's Family	Katherine S. McLeod
Jackman Foundation	Peter Kirkbride	Margaret Lynch	Robin McLuskie
Donald K. Jackson and Family	Robert Kitchen	M&M Meat Shops Ltd.	Randy McMeekin
Marcia and Rob Jajarmi	Claudette & Holger Kluge	John MacDonald	Hazel McMillan
Lidwina Maria Jambor	Ralph Kollars	Angela and James Machado	Ian Kidson and Carole McNabb
Gail Elaine James	Sharon Koor	Ann and Douglas Mackay	Sue McNamara
James H. Cummings Foundation Inc.	Koskie Minsky LLP	Bruce and Yvonne MacKay	McNeil Consumer Healthcare
James Waters Investments Ltd.	Brian D. Kosoy	Anne Mackay	Tammy McNeil
Jarislowsky Fraser Donor Advised Foundation	Paul and Rhonda Krandel	Nancy MacKellar	Peter McRae
Alfred Jay	The Krembil Foundation	Mackenzie Investments	MDC Partners Inc.
Jayarmiker Investments Ltd.	Edward C. Kress	Mackenzie Investments Charitable Foundation	Medcan Health Management Inc.
Jeanne Lottie's Fashion Inc.	Joseph Krochak	The MacKinnon Family	MediaEdge Communications Inc.
The Jeff Charriere Foundation	KTI Limited	Ted Macklin	Robert and Phyllis Meiklejohn
	Neonila and Alexander Kunyk	Michael MacMillan and Cathy Spoel	Barbara Mendelsohn
	Kwitman Family Foundation	Lee and Gregory MacNeil	Mentor Medical Systems (Canada) Inc.
	L.I.U.N.A. Ontario Provincial District	Scott MacNicol	David Menzel
			Joanne Mercer

Our Donors

Meridian Credit Union	Norco Bicycles	Dorothy Perry	Simon Rosen
Meritview Decorating Ltd.	Noreen Fraser Foundation	Marie Perry	Felicia Ross
Cindy Merrigan	The Norman Black Foundation	Pesca Builder Corp.	Kenneth and Helen Rotenberg
Metropia Management L.P.	Normerica Inc.	Lino Pessoa	Nathan Rothwell
Tom Anselmi and Sharon Mey	Merlyn North	Anne and Henry Peters	Sandra and Joseph Rotman
Michael La Patriello Fund	Northam Realty Advisors Limited	Constance Peters	The Rotman Family Foundation
Michael Ryan Leal Fund	Northleaf Capital Partners Ltd.	Pharmaceutical Partners of Canada Inc.	Myrtle E. Rous
Michael Bros Excavating and Grading	Nostrade Franchising	Pharmascience Inc.	Roy Foss Motors
Michelle and Michael Levy Family Foundation	Nu-Mode Dress Co.	Phenomenome Discoveries Inc.	The Royal Canadian Legion General Wingate Branch 256
Daniel Mida	Marlene Nyilassy	Philip J. Solondz Family Foundation	Royal Laser Mfg Inc.
Sasha Mikijelj	Avril Louise O'Brien	John Philp	Royal Military Colleges of Canada Foundation Inc.
The Miller Tavern	Allan and Lesley Offman	Charles E. Pihl	Michael J. Rozario
Miller Waste Systems Inc.	Sharon O'Gorman	Richard Pilosof	RP Investment LP
Elizabeth A.Milne	David and Gwen Oliver	Robert and Liane Piltz	Laurence and Mark Rubin In Honour of Karen Meltzer
Michael Milosevic	Ursula Margot Ollesch	Polar Securities Inc.	Ida Sarah Rubinoff
Tom Milroy	Friends and Family of Louis Y. Ongpin	Murray H. Pollitt	Sheila Rubinoff
Milton and Gwen Yacht Family Fund	Ontario Council of Painters	Robert and Lorraine Pontarollo	The Family of Melvyn Paul Rubinoff
Mark Mincer	Ontario Kinesiology Association	Power Corporation of Canada	Peter Ruby and Stephanie Kirsh
Mirolin Industries Corp.	Ontario Sheet Metal Worker's and Roofers Conference Inc.	Maurice Preston	Molly Rundle and Stephen Lister
Bruce H. Mitchell	Opus Homes Inc.	Priestly Demolition Inc.	Barbara Russell
Mitsubishi Canada	ORC Foundation	The Primrose Charitable Foundation	RZ Capital Inc.
MNP LLP	The Orokawa Foundation	Leland Arthur Prittie	S.R.T. Med-Staff
Moderna Niagara	Orpheus Investments	Progress Luv2Pak International Ltd.	Susan Sacchi
Neda Moeini	Steven Hurowitz and Diane Osak	Martin and Ellen Prosserman	The Salden Foundation
Ruth Mogil	Blair Osborne	PTC Inc.	Salesforce.com
Moglia Family Foundation	In Honour of Beryl O'Shea	Tyler Puley	Cynthia Samu
Tania Molinaro	Brian O'Sullivan	Nick Puopolo	Maria Sherma Samuel
Jimmy Moniz	Jean Elizabeth Oswald	Quality Custom Blending Limited	Henry Sanchez
Marguerite Mooney	Amit Oza	Queen's Players Toronto Theatre Group	Charles Robert Sanderson
Geoffrey Moore	Padulo Integrated Inc.	Elaine and Don Rafelman	Sandstrom Trade and Technology Inc.
In Honour of Lisbeth Moore	Urban Painting & Decorating Ltd.	Oskar and Esterita Rajsky	Sandylion Sticker Designs
Daisy Morrison	David H. Pakrul	Ralph Lauren Corp.	Sanpaul Investments Ltd
David Morrison	G. Palazzo	Frank and Sharon Ramagnano	Giancarlo Sansalone
Lesley Morison	Panalpina Inc.	Rapini's Ristorante Ltd.	Angelo and Yvette Santorelli and Family
Scott Morrison	Irene Pantalone	Robert S. Rawlings	Sheetal Sapra
Mortab Limited	In Honour of Walter B. Pape	Raysearch Laboratories	Andrea Sass-Kortsak
James Morton	Paradigm Capital Inc.	RCC Group Inc.	Lolita and Matthew Savory
Morton Family Endowment Fund	Paul Parete	Registered Nurses Association of Ontario	John A. Sawyer
In Honour of Liliana Josephina Morvay	Allen E. Parks	Margaret W. Reid	Andrew G. Scace
Mosaic Cares (Mosaic Sales Solutions Canada)	James Parks	John Reilly	Susan Scandiffio
Multiple Myeloma Canada	Graziella and Beppino Pasquali	Irene Reingold Family Foundation Dr. Morton Reingold	Manny and Lorraine Schacht
Bruce R. and Marcia Ann Murray	Andrew Pastor	Remington Homes	Michael Schatz
Carla Murphy	Frank Paszat	Renata Humphries	Jan Scheeres
Glenn Murray	Gita Patel	Anne-Marie Renaud	Schneider Electric Canada Inc.
Freda Ariella Muscovitch	Nilesh Patel	Russell A. Reynolds	Schumacher Family Foundation
Steven Muzzo	Patene Building Supplies Ltd.	Barry Reznick	Jeffrey Schwartz
Myer Salit Ltd.	Princess Margaret Cancer Centre - Pathology Associates	Elizabeth Rhind	Martin Schwarz
Arnold and Libby Naiman	Patrick and Barbara Keenan Foundation	Warren James Rhodes	Robert and Doreen Scolnick
Alexei Nakonechnyi	Rose Patten and Thomas DiGiacomo	Friends and Family of Marilyn Ricci	Deborah Scott
Julie Naruse	Sherwin Paul	Kathleen Alice Richards	Seagate Contract Management Ltd.
Ruth Naruse	Pave-Al Limited	Elsie A. Richardson	Erin Searle
Nashville Developments Inc.	Olga and Nikolay Pavlen	James Rickard	Charlotte Elenor Selby
National Cancer Institute of Canada	Paxman Coolers Ltd.	Riedel Crystal of Canada	Rose Helen Seli
Nat'l Conference-Community Cancer Program	David G. Payne	Lance Rishor	Paul Selick
Neelands Group Limited	PBS Building Supplies Ltd.	Barb and Ced Ritchie	Service Results Technology Inc.
Robert Nelson	PCL Constructors Inc.	David Ritchie	Barry Shafran and Denise Amram
Marc Nesi	Peter Pearce	Jo-Ann E. Ritchie	Ashish Sharma
New Enterprise Garth Moving Inc.	John Pearson	RLS Charitable Giving Fund	Isadore and Rosalie Sharp
New Solutions Financial Corp.	Family and Friends of Nada Pehar	Roadside Paving Ltd.	Maureen Shaughnessy Kitts
New York Fries South St.Burger Co.	Israel Pelc	Antia Robins	David Shaw and Gary Miller
The Neziol Group	Pembina Pipeline Corporation	Betty Rodger	Shawn's Miracle Fund Mozersky Zand
Gwen Ng	Brian Pendleton and Chad Goldman	Steve Rodriguez	Margaret Sheppard
Tommy Ng	Paul Penna	The Rogan Foundation	Fred Sherratt
Nick and Lynn Ross Charitable Foundation	Brian Penny	Rogers Communications Canada	Donna and Randy Shiff
Stanley Edward Nicolle	PepsiCo. Canada	Rose Reisman Catering	Shimmerman Penn LLP
Arnold James Noftall	Performance Auto Group	Paul Rosen	Shipp Corp. Ltd.

Shiseido (Canada) Inc.	Swarovski Canada Ltd.	Gerald and Nancy Tsai	Westdale Properties
Simona Shnaider	Malcolm and Marjorie Swartz	Richard Tsang	Westwind Partners Inc.
Shoreway Flooring Ltd.	Swiss Herbal Remedies Ltd.	Betty Tse	Gabriele Westwinkel
Bruce Silcoff	Swiss Reinsurance Company Canada	Susan O'Neill Tsicrycas	Katherina Kaiser Wheatley
Isilda Graca Da Silva	Sue Symington	TSL Limited	Kathryn White
Murray Silverberg	Ardith and Greg Symmes	Tuchman Family Foundation	Cassandra White
Sid and Sue Silverberg and Family	Syntio Group Inc.	Richard S. Tucker and Lily Dabby	Whitehorse Liquidity Partners
William John Kenneth Simpson	William A. Szego	Tuckernuck Management Services Inc.	Jack Whiteside
Esther and Ronald Sirkis	The T.R. Meighen Foundation	Tufillo Construction Corp.	Tracey Wilder
Faida Smale	Bonnie Hung Ta	Aubrey George Tullett	William & Betty Finch Fund
David Smith	Harry Tam	Ellen and David Turk	Damon Williams
Reginald Smith	Kenneth Tanenbaum	Philip Turk	David and June Williams
Roy Smith	Tangerine Investment Funds Ltd.	Michelle Ummels	Elizabeth Wilson
William Thompson Smith	Fred Tanguay	Union for International Cancer Control	Jane Wilson
Smith Lyons LLP	Nancy Tarek	University of Alberta	Lynn Wilson
Smith Share Foundation Inc.	Remembering Sister Mary Tasker	Upper Lakes Group Inc.	Timothy Wilson
Snap Promotional Innovators Inc.	Frank Tatone	Upper Crust	Joan Windeler
Snell Medical Communication Inc.	Diana Taylor-English	Urbakon Limited	Ronna Winkler
Sofina Foods Inc.	Ashley Taylor	Jean Van Cauwenberghe	Charles M. Winograd
Soloway Wright LLP	Garth Taylor	Van der Graaf Inc.	In Honour of Earl Charles Winter,
Soncin Construction Corporation	Rick Taylor	John Van Netten	Charles Winter, Moses Wolfson,
Sonor Foundation	Roy Taylor	Bill & Sarah Vanderburgh	Abraham ("Art") Wolfson and Rachel
Marisa and Edward Sorbara	Stan and Gloria Taylor	Vantage Insulation Ltd.	Winter
Peter Soumalias	Derek Teevan	John Varley	Jerold Winter
South Caledon Soccer Club	Tina Tehranchian & Shahdad Bekhrad	Anne Nitsa Vasoff	Lynda Wise
Southam Inc.	James C. Temerty	George Vassallo	Fern and Herb Wisebrod
Specialty Building Products Ltd.	Mark Teskey	Verax Inc.	Jack and Nan Wiseman
Speedy Muffler King Inc.	Roy Teskey	Annette Verschuren	Stephen Witts
Jeffrey Spinks	Stanley C. Tassis, Our Hero Lovingly	Yvonne Vetere	David and Mary Wolf
Spirax Sarco Inc.	Remembered	VHL Alliance	Barbara Wolfond
Sport Property Mgmt Group Inc.	Ajit Thagad	Viana Roofing & Sheet Metal Limited	Greg Wolfond
St. Dunstan of Canterbury Church	Therapure Biopharma Inc.	Lou and Lilyan Vigoda	Elsie Wolnity
St. Michael's College School	Kevin Thistle	Visa Inc.	Kan Sum Wong
St. Michael's Hospital Foundation	In Honour of Susanne Thomas	Nancy J. Vivian	Sheila Wong
Helen Allen Stacey	Marcelle Gai Thomas	Vivian and David Campbell Foundation	Shun Wong
Mary Patricia Stagg	Stanley and Adrienne Thomas	Milan and Catherine Voticky	Ella Wood
Sheila Stahl	Warren Thomson	Votorantim Cimentos	Robert Wood
Starfield Lion	Janis Ann Thor	Darko and Erika Vranich	Richard Wookey
Helen Stark	Throat Threads Apparel Inc.	The W.P. Scott Charitable Foundation	Jim Wortzman and Jaimie Robins
State Building Group	Frederick Albert Tilston	Elliott and Helene Wahle	Arthur Raymond Wright
Ken Stathakis - The Octagon	Timex Canada Inc.	Lorie Waisberg	Sarah Wright
Restaurant	Shan Cheng	Paul Waitzer	Donald Robert Wylie
Gaye and Andy Stein	Tomintoul Investments Limited	Frederic Waks	Xerox Canada Ltd.
Bonnie Stephen	Tomkins Gates Corporation	Walden Services	Xplornet Communications Inc.
Naomi Stephens	Jeff Tonken	Gerda Zettler Waldhart	Michael Yan
Julie Stern	Tony Koukos World Travel Photography	Mary Elisabeth Wallace	Tuan Yeap
Samuel Stern	Lorna Elizabeth Tooker	Peter and Kimberlee Wallace	Lim Yeoh
Anne Robertson Steven	Toronto Civic Employees Union Local	The Walter Puterbaugh Fund	YMG Private Wealth Management
Irene May Stevenson	416	Craig S. Walters	Nanci York
Bert and Barbara Stitt	Toronto Firefighters Charities Inc.	Walters Group Inc.	York Marble Tile & Terrazzo Inc.
Alan and Cheryl Stoddart	Toronto Hydro Employees' Charity	Shannon Walton	Frances Joyce Young
Strada Aggregates	Trust	Anne and David Ward	Ginette and Donald J. Young
Derrick Strizic	Toronto Maple Leaf Hockey Club	Gwedolene Stella Ward	Nancy V. Young
Bertha Anna Belinda Stuart	Toronto Professional Inc.	Padraig and Marian Warde	Sam and Shirley Young and Family
Mary E. Stuart	Alex Tosheff	Ralph Ross Ware	The Young Family Foundation
Barbara Stymiest	Trans Power Utility Contractors Inc	Marjorie V. Waters	Young & Rubicam Limited
Sudbury Lime Limited	Transamerica Life Canada	Ron Waters	Shirley Young
Sudbury Regional Hospital	Transcontinental Media Inc.	Albert Watson	Marilyn L. Yunis Family Foundation
Shiori Sudo	Trans-Ontario Ceiling & Wall Systems	Watson Limited Partnership	Elisse Zack
Andrea and Aubrey Sugar	Inc.	Neville Marcus Weare	Linda Zaretsky
Barbara Sugar	Travelers Guarantee Company of	Diana Weatherall	Aaron Zevy
Fahim Sultan	Canada	William Webb	Dov Zevy
Sun Media Corporation	Travos Automotive Inc.	Alan James Wedlock	Lawrence and Linda Zimmering
Sunnybrook and Women's College	Trevisana Kitchens & Interiors	Susan Weisbarth	Richard Zurawski
Health Sciences Centre	Tridel Corporation	Peter Weiss	Zurich Canadian Holdings Ltd.
Sunoco Inc.	Trio Roofing Systems Inc.	Welded Tube of Canada	Zzen Group of Companies Ltd
Sunspace Modular Enclosures	Eric Tripp and Maria Smith	Wellington Laboratories inc.	
Superior Plus Corp.	Triumph International (Canada) Inc.	Wellpoint Health Services Inc.	
The Susan G. Komen Breast Cancer	TrizecHahn Corporation	Woodrow Wells	
Foundation	Terri Truscello	Brigitte Westaway	

JCB Grant Society

Membership in the JCB Grant Society is offered to donors who have included The Princess Margaret in their will or have made a gift of life insurance. We are deeply grateful to the members listed here.

April 1, 2020 to March 31, 2021

Frances I. Masfield Acheson
Val and Ernie Adriaanse
Scarlat Albright
Bruce Alexandor
Omar Ali
Nicolas Alipheris
Paul and Sheila Alofs
Keith Ambachtsheer and Virginia Atkin
Roger Andersen
Shirley Arnold
Chuck Arrigo
Norman K. Ashurst
William F. Badke
Jack and Patricia Barclay
Katharine E. Barilla
Yee Bell
Francesco Benichasa
Roslyn and Bernard Bennett
Beulah Besharah
Rita Bette
Aruna Bhatnager
Rosa Bianca
Nicholas & Zachary Blease-Trepanier
Michel C. Bois
Frank Bosco
Robindra N. Bose
John and Susan Bowey
Harold and Fredelle Brief
Beverley A. Briggs
Rob Bristow
William P., Gail and Billy Brown
Ruth M. Buchanan
Reta Burrows
David and Paula Butterfield
Laura and Sven Byl
Richard Cadieux
Irene Calo
Fausto Carbone
Gail Carman and Dave Hollingworth
Dorothy Carr
In Honour of Jim Chamberlain
Margaret E. Chapman
Paul Chen
K. Carol Christian
Joyce K. Chung
Valerie and James Clark
Anne Clements
Julie Colosimo
Luciano and Paola Colozza
Olga and Warner Cowan
Janice S. Crichton
Barb Crisp
Barry Crookes
Beryl Cruse
Enola Czech

Fern Daiter
Aspasia Dassios
Julie Davis
Shirl Davis
Jean Davison
Mary Dawkins
Tim Devlin
Joseph Di Geso
Daniela Di Giantomaso
Louis Michael
Wilson G. Dow
Jessie L. Dowling
Diane N. Drotos
Rudy D'Souza
Joao J. Dutra
Linda Ecclestone
Naomi Eisenberg
Andrew Colwell & Richard Ellis
Leola English
Audrey Ennis
Patricia Ewart-McLean
Roy A. and Elizabeth J. Fawcett
Mike Scapicchio and Patricia Fazzari-Scapicchio
Joseph Fehrenbach
Lisa and Ron Feyerabend
Dalit Fichman
Madeline Fielding
Maria Filosa and Gino Ortuso
Leland J. Fisher
Patricia K. Ford
Jake E. Fowell
Linda J. Freedman
Sherri Freedman and Jeff Hoffman
Sandra J. Frost
Larry and Eileen Fryer
Michelle Fuss
Anthony Fyles
Alex Gallagher
Kathy Gullivan
Monica L. Gaudry
Paul Gauthier
Marilyn Gazey
Ian Gibbard
Florence Gibbons
Karen Girling
Shirley Goldenberg
Lillian Gordon
Ethel Gorlick
Carol Greenwood
Christopher G. Guest
Cathy Hale
Craig Hanna and Margaret Hanna
Doris Hansen
Kevin Harper and Victoria Clare

Elaine Dale Harris and Monte Hartley
Harris
Helen Phebe Hatton
Sharyl Haynes
Lenard Haywood
Suzanne Hearn
David Hedley
Brian Hellyer
Patricia Henderson
Robert I. Hendy
Grant Hern
Joan R. Hickey
David and Louise Hilson
Timen P.Ho and Ling H. Ho-Lai
G. Holmes & D. Cormack
A. D. Holt
Bill and Karina Hope
Joan Pui-Ying Hosang
Peter Hume
Tommasino-Timpano Iozzo
Joan I. Jackson
Simon L. Jackson
Maureen James
Margaret Jenkins
Agnes Jenkinson
Nancy Jennings
Fran Johnston
Barry Jones
Lee-Anne Kant
Jeff Karl
Diane Karnay and Stuart Bollefer
Geraldine Kavanagh
Carla Keel
Grace Kelly
Nora Kent
Kathryn Kernohan
Andrea Kinch
Neville and Lorraine Kirchmann
Paula Kirsh
Selwyn and Pippa Kossuth
Sherry Kou
Vito and Catherine Labate
Margaret, Audrey and James Laidler
Harold Lane
Linda Langero
Colin Languedoc
Barry Lebow
Gail S. Leder and Daniel Z. Goodwill
Connie Lee
Joan and Bob Lehman
Kathleen D. Leslie
Charles E. Letman
Daniel Lichtman
Irene M. Lloyd
Debbie Locke

Audrey Loeb and David Ross
Margaret Jane Logan
Maria Loschiavo
Rita Loudior
Margaret Lynch
Mary and Garth MacGirr
John and Gail MacNaughton
Jaudon and Jasper Cobb Martin
Robert Martin
Antonio and Seli Masegosa
Dana Maslic
Aureade Massey
Doris McCartney
Janice McDonald
Paul McNab and Mary Collins-McNab
Beverly McRae
Steve Merker and Cathy Buchanan
Rosa Milano
Barbara Jean Miles
James Miller
Patricia Miller
Ruth Milne
S. Milne
John K. Mitchell
Lois Mitchell
Parbattee, Anthony and Sharon Mohip
Carla Monk
Doris J. Moore
Harold A. Morden
Eleanor Morgan
Brad Morris
Carol Morrison
Marlene Morriss-Taylor
Miriam Mozes
Sanjib and Bharati Mukherjee
June Murdoch
Freda Ariella Muscovitch
Elizabeth (Libby) Mussell
Margaret and William Myers
Jill and Reed Nelson
Susan Newman
Pamela and Donald North
Betty-Lou Northway
Aimee M. O'Connor
Manuel Oliveira
Andrea Orr
Marie J. Overweel
Bill and Jan Paris
Marshal and Tina Partnoy
Robert L. Paterson and Larry J. Westwood
John Patterson
Colleen Peacock
Brian Pecic
Borge and Dianne Pedersen

Myta Peters
 Stan and Helen Petrowski
 Robert L. Pidgeon
 Diana M. Plant
 Sofia Polyanovsky
 Karen M. Potter
 Clare Price
 Linda Puma
 Abel Quintal
 In Honour of Suzanne Margaret
 Ramsay
 Kathryn and Julian Rance
 Nita and Don Reed
 Bernie Rees
 John Reilly
 Gladys Rennie
 Edna Reynolds
 Lionel and Helaine Robins
 Charles H. and Kathleen A. Robinson
 Marnie and Michael Rodgers
 Betty Ross
 Coleman Rotstein

Ross and Gwenda Roxburgh
 Therese Roy
 Marci J. Rubinoff
 Ruth E. Russell
 Cookie and Stephen Sandler
 Patricia Sauerbrei
 Idola G. Semple
 Naju B. Shroff and Keki B. Shroff
 Margaret Simmons
 Graham T. Skells
 Linda Sky Grossman
 Alanna Smith
 Thomas Smith
 Helen Stark
 Marcel Steinz
 Elsa and Ted Stringer
 Shannon and Micheal Stuart
 Ann D. Sutton
 Dorothy Sutton
 Eva and Gabor Szekely
 Richard F. Tayler
 Douglas A. Taylor

Tina Tehranchian
 Helen Tennyson
 Frederick Tiley
 Joan Tilt
 Gordon Tozer
 Mildred Trachtenberg
 In Honour of Beryl Elizabeth
 Trimming-Green
 Jerry Trestik
 Gillian Tuffin
 Jackie Tuffin
 Belal Uddin
 Nancy J. Vivian
 Robert and Wanda Wagner
 Lisa L. Weaver
 Sophie Weimert
 Vanessa Wellwood
 Maryann Weston
 Robert L. Paterson and Larry J.
 Westwood
 Mary E. Whitaker
 Linda Whyte

Charles T. Wilson
 Debra Wilson
 Jane M. Wilson
 Norma and Sharon Wilson
 Robert Elliott and Paul Wilson
 Mary Winter
 Jonathan Wisebrod
 Susan McLean Woodburn
 Donald and Janice Woodley
 Betsy Wright
 In Honour of Diana Wright
 Donald A. Wylie
 Morden S. Yolles
 Ginette Young
 Chung-Fu Yu
 Robert & Lois Yuill
 Valentina Zatskoy Loper
 John Zeger
 In Honour of Doris M. Riddell, her
 son Todd W.T. and her husband Ben
 Yacoub

Special Events

April 1, 2020 to March 31, 2021

Adam Coules Tribute
 Bake For A Cure
 B-Strong Walk
 Cars 4 Cures Inc.
 Cheryl's Hope Golf Tournament
 Clarry for Captain
 Constantine Yorkville Run
 Dan's Backyard BBQ Sheehan Family
 Delta Pi Sorority Ribbon & Roses
 Auction
 DIY
 Donate A Car Campaign

Fight for a Cure
 Friends for Life
 Garage Sale for Esophageal Research
 Group n Groove
 IAHSS Ontario Chapter Golf
 Tournament
 Jacquie Mummery Memorial Ride
 Jason Freeman's Cancer Crushfest
 Jesse Strong T-Shirts Fundraiser
 Journey to Conquer Cancer- Run or
 Walk
 Kathy Morrison Memorial Golf Classic

Kelly's Fighting Chance
 La Vie en Rose - Adina Isenberg
 Michelle Temple Walk a thon - Newton
 Grove School
 Par for the Cause
 Pink City Classic Basketball
 Ratech Golf Tournament
 Ribbon of Hope
 RSA Canada
 Scary Hair
 Scavenger Hunt in Memory of Zahora
 Shookally

Scotiabank Waterfront Toronto
 Marathon
 Shiloh Christian Institute's
 - Read-A-Thon
 Squash Dementia
 Taylor Cup Pond Hockey Championship
 Toronto Marathon
 The Gerry & Nancy Pencer Events
 The Isolation Run
 The Sarah Curia Annual Picnic for Life
 The Virtual Chase
 Under Armour Spring Run Off

Expendable Funds List

April 1, 2020 to March 31, 2021

Abbott Nutrition Survivorship Education Fund	Cancer Research Fund	Elana Waldman Fund	GU Robotic Surgery and Research Fund
Adelson Foundation Fund for Ovarian Cancer Research	Campbell Nursing Fund	Elizabeth and Tony Comper MPN Program Fund	Gucciardi Family Fund for Cell Therapy
Advanced Molecular Diagnostics Initiatives Fund	Campbell Nursing Initiative Fund	Elsa and Ted Stringer Fund	Harley Ulster and Cindy Leder Multiple Myeloma Research Fund
Advanced Technology General Surgical Fund	Canary Foundation Fallopian Tube Project Fund	Elysa Lipson Endocrine Cancer Fund	Harold and Eve Corrigan Family Cancer Research Fund - Leukemia
Agnico Eagle Accelerating Innovation Fund	The Carlo Fidani Foundation Fund-Molecular Imaging Program	Epstein Family Research Fund	Harold and Eve Corrigan Family Cancer Research Fund - Psychosocial
AI and Microbiome Program Fund	CGI Group Fund	Epstein GTX Research Partnership Fund	Harrison McCain Foundation Radiation Training Program
AI Hertz Centre for Supportive and Palliative Care Fund	Charles and Marilyn Gold Family Foundation Fund	Estelle Craig Family Fund	Haynes Connell Foundation Breast Cancer Fund
AI Hertz Centre for Supportive and Palliative Care - Palliative Care Physicians	Charles Krowitz Burkitt's Lymphoma Research Fund	Etta and Shiri Shastri Cancer Research Fund	HBB (Healing Beyond the Body) : Patient Support Fund
The AI Hertz Urgent Care Facility Fund	Charlotte Belz Melanoma Research Fund	Familles Papineau & Dunlap Families Leukemia Research Fund	Head and Neck Cancer Post-Surgery Rehabilitation Research
Allan and Ruth Kerbel Trust Fund	Christopher 'Chip' Trueman Fund for Esophageal Cancer Research	Farncombe Family Therapeutics Fund	Healing Beyond the Body Volunteer Program Fund
Allan and Shirley Taylor Fund	CMF (Canadian Mesothelioma Foundation) Education and Training Fund	FDC Foundation CNS Cancer Methylation Fund	Hertz Fund for Disorders of Vestibular Function
The Allison Family Airway Fund	Coalition to Cure Prostate Cancer 2012 Young Investigator Award Fund	FDC Foundation Early Detection Fund	Hillary Firestone Ovarian Cancer Research Fund
The Alofs Family Fund	COBRA Trial Fund	Fire Fighters' Cancer Research Fund	Hodgkin's Lymphoma and the Microenvironment Research Project Fund
Amelia Plastina Breast Cancer Research and Equipment Fund	Cure for Lung Cancer Team Fund	Frank A. Ragona Fund	Hold'em for Life Award Fund
Andrew and Barbara McIntyre Lymphoma Research Fund	Daniel Alan Sheehan Brain Tumour Research Fund	Freed Family Fund	Hold 'em for Life Breast Cancer Research Fund
Ann and Irving Storfer Lymphoma Research Fund	David and Paula Butterfield Ovarian Cancer Database Fund	Friends for Life Fund	Hold'em for Life Fellowship Cancer Research Fund
Ann Boroah Endometrial Cancer Research Fund	David and Sharon Aello Skull Base Fund	Friuli Cancer Research Academic Exchange Program Fund	Hold'em for Life Prostate Cancer Research Fund
Anna-Liisa Farquharson Kidney Cancer Research Fund	David and Sylvia Cape Breast Cancer Research Fund	The Frontline Fund	Ian and Anne Devine Fund
Arthur Cushing Multiple Myeloma Research Fund	David Cornfield Melanoma Research Fund	The Gary Bluestein Charitable Foundation Cell Therapy Fund	Ian Lawson Van Toch Cancer Informatics Fund
Barbara Lee MacFadyen Cartwright Cancer Research Fund	David and Sharon Aello Skull Base Fund	Gattuso Rapid Diagnostic Centre Fund	Ian Telfer and Nancy Burke Radiation Oncology Research
Barnett Music and Art Program Fund	The David Geneen Fund for Stem Cell Transplant Research	Gattuso Slight Personalized Cancer Medicine Fund	Ida Rubinoff Patient Support Fund
The Beckie Fund for Breast Cancer Research	David Shapiro Fund for Radiation, Chemotherapy and Nuclear Medicine Programs	General Electric Canada Inc. Fund	IFSTC Mesothelioma Early Detection Study Fund
Ben and Hilda Katz Charitable Foundation Fund	Desmond and Pamela O'Rorke Drug Development Fund	George A. Cohon Fund for Reconstructive Surgery for Prostate Cancer	Immunohistochemistry Development Fund
Benny Libman Patient Care Fund	Diane Lanthier Nursing Care Fund	Gerald and Paula Kirsh Family Fund	Imperial Oil Foundation Mesothelioma Research Fund
Bette Johnston Cooperative Student Scholarship Fund	Discovery Clinical Research Fund	Gerald J. Goldenberg Fund for Pancreatic Cancer Research	Isenberg Family Fund
Bhalwani Family Hereditary Cancer Fund	Domenic Dell'Elce Fund	Gerald Schwartz and Heather Reisman Liver, Pancreas and Biliary Centre	Issie's Quest for Ovarian Cancer Research Fund
The Biomarkers Prostate Cancer Research Fund	Donati Family - St. Michael's Majors Ovarian Cancer Fund	Gerry & Nancy Pencer Brain Trust Fund	J. David and Jan Crichton Fund
Boehringer Ingelheim MP Innovation Project Fund	Dorrance Drummond Family Fund	Gerry Ruby Fund	Jack and Esther Cole and Family Prostate Centre Fund
Boraiah Sreeharsha Education Fund	Dr. Annie Smith Bear Fund for Ovarian Cancer	Giovanni and Concetta Guglietti Family Cancer Fund - Cervix	Jack and Rose Wine Leukemia Research Fund
Boutilier Family Triple Negative Breast Cancer Research Fund	Dr. B. Zanke Oncology Research Fund	Giovanni and Concetta Guglietti Family Cancer Fund - Radiation	Jack Weinbaum Prostate Prevention Fund
Bram Appel Fund for Molecular Diagnostics in Ovarian Cancer	Dr. Elzbieta Rosnowska-Perera and Dr. Norbert Perera Fellowship Fund	Giovanni and Concetta Guglietti Family Fund	James Kinnear Fund
Bruce Galloway Fund in Head and Neck Cancer Research	Dr. Geoffrey R. Conway Chemotherapy Fund	Goldie Risenman Fund	The Janet D. Cottrelle Foundation Ovarian Cancer Fund
Campbell Family Cancer Research Institute Fund	Ed and Fran Sonshine Ovarian Cancer Fund	Gordon and Donna Feeney HPB Surgical Fellowship Fund	
Campbell Family Institute for Breast	Edie and Eric Yolles Cell Therapy Research Fund	Gordon F. Mutch Research Fund for Leukemia	
	Egan Head and Neck Cancer Radiation Fund	Gordon Tozer Head and Neck Cancer Bio-Clinical Anthology Fund	
		Greenberg-Ritchie Fund	
		Greenpark Blood Transfusion Unit Fund	
		GTX Program-Surgery-Engineering Support Fund	

Janet Rosen Fund	Marvin and Linda Barnett Leukemia Fund	Paul and Doreen Sudolski Multiple Myeloma Research Fund	Shirley and Sidney Cohen Fund for CLL
Jim Chamberlain Sarcoma Research Fund	Marvin Arbuck Esophageal Cancer Research Fund	Paul & Rhonda Krandel Fund	Shiu Pong Group Immunotherapy Fund
Joan and Ken Taylor Multiple Myeloma Research Fund	The Mary Susan MacDonald Stomach Cancer Research Fund	Paul Finger Fund for International Fellowships in Ocular Oncology Education	Jaclyn Shulman Research Fund
Joan and Weldon Levine and Family Fund for Myeloma Research	Master Insulators Association of Ontario Inc. Fund	Paul Finger Fund for Ocular Oncology Bioinformatics	Slaight Family Foundation Fund
Joan Parkes Gynecological Cancer Research Fund	Max Tanenbaum Garden Fund	Pearl Banks Fellowship in Melanoma Research and Patient Care Fund	Slavens Family Fund
Joe's Team Fund for Translational Research	McCain GU Biobank Fund	Pencer Centre PFAC Fund	The Stanley Tessis Prostate Cancer Breakthrough Research Fund
John and Myrna Daniels Endocrine Research Fund	Melvyn Paul Rubinoff Melanoma Research Fund	Petersen/Turofsky Head and Neck Supportive Care Fund	Stephen Duviner Pancreatic Cancer Research Fund
John and Nina Cassils Fund	Menkes Family Innovation Fund in Thoracic Surgical Oncology	The Philip Lavorgna Life Over Lymphoma Fund	Steven Hoffman Fellowship in Molecular Genomics Expendable Fund
John Finlay Oncology Fund	Merck NDD Fellowship Fund	Philip Mincer Fund	Strobele Family Guided Therapeutics Research Fund
John Fortney Party Fund	Michael Albert Garron Fund	Philip Orsino Cell Therapy Translational Research Fund	Sue Bristow Leukemia Fund
John L. Hickey Fund	Michael J. Dickinson Endoscopic Equipment Fund	Posluns Family Fund	Surgical Innovation and Education Fund
John Steinberg Fund	Michael Ryan Leal Fund	Pusateri's Adult After Care Fund	Susan Armitage Medical Imaging Capital Purchase Fund
Judy and Wilmot Matthews Health Services Research Fund	Michael Wise Memorial Fund	The RACH Fund	Suzanne Kamel Reid Genetics Fund
Karen Meltzer Lectureship Fund	The Michele Temple Melanoma Research Fund	The Ralph and Edith Fisher Memorial Fund	Tara Fund
Karen Morton Fund	Most Wanted Fund	RAS Cancer Mutations Research Fund	TD Collaboration and Recruitment Fund
The Kelly Silverstein Fellowship Fund	Motorcycle Ride for DAD Fund	Rebecca's Hope Leukemia Research Fund	TD Watchman Trials Fund
Kidney Cancer Research Network of Canada Fund	Muzzo Family Minimally Invasive Surgical Oncology Program Fund	Reconstructive Surgery Clinical Research Fund	The WB Family Foundation Research Fund
The KY Ho and Family Tumour Imaging Innovation Fund	Muzzo Family Robotics Program Fund	Richard LeGresley Biliary Cancer Research Fund	Theranostics Education Fund
Larry Houghton Pancreatic Cancer Research Fund	Nadi Meir Fund	Robert Buckman Fund	Tito and Maria Sansalone Fund
The Laura S. Rocca Fund	The Nadir and Shabin Mohamed Foundation Fund	Robert and Andree Rheume Fitzhenry Brain Metastasis Fund	Toronto Ovarian Cancer Research Network Fund
Lee Greenspoon Gastrointestinal Cancer Research Fund	Nathan Perlis Fund	Robert Elliott and Paul Wilson Pancreatic Cancer Research Fund	The Turack Family Fund
Libby and Michael Goldgrub Gynecological Cancer Research Fund - Radiation	National Pancreatic Cancer Canada Foundation Fund	Robert V. Brady Award Fund	Wallace and Margaret McCain Fund
Libby and Michael Goldgrub Gynecological Cancer Research Fund - Medical Oncology	Neuroendocrine Tumour Research Fund	Robin and Barry Picov Family Breast Cancer Research Fund	Warren-Connelly Palliative Care Development Fund
Lily Silver Magic Castle Fund	The Nicole Nardi Fund	Roche Melanoma Pathology Fellow Fund	The Weir Family Brain Cancer Research Fund
Linda and Marvin Barnett Fund	Niki Bledin Ovarian Cancer Fund	Roche Fellowship in Drug Development	Wendy Eisen - Celebration of Life Fund
Lisa Coristine Brave Heart Fund	Nita and Donald Reed Adaptive Therapy Fund	Romeo DeGasperis and Lymphoma Canada Foundation Research Fund	Wharton Fund for Head and Neck Cancer Research
Lisbeth Moore Leukemia Fund	Nora Rudnick Ovarian Cancer Research Fund	Ronald Buick Symposium Fund	Wilson Sarcoma Research Fund
Liver Cancer Radiation Research Fund	The Norman and Marian Robertson Charitable Head and Neck Surgical Clinical Trials Program Fund	Ronna Winkler Non-Hodgkins Lymphoma Research Fund	Winberg-Pollack Breast Cancer Education
The Lo Family Fund for Leukemia Research	Ophthalmology Leslie Estate Fund	Sam Sniderman and Janet Mays Ovarian Cancer Fund	Wittrock Prostate Cancer Research Fund
Locally Advanced Breast Cancer Imaging Fund	Palliative Pacers Fund	Samuel Levinson and David Family Fund	Zarboni Fund
Lusi Wong Lung Cancer Early Detection Research Fund	Pamela Mary Hosang Ovarian Cancer Research Fund	Samuel Family Foundation CT/PET Centre Research Fund	The Zoe Springer Memorial Fund
Lynn Douglas Fund	Pat Nichols and Bob Tundermann Cancer Care Fund	Sandra Foyston Patient Education Fund	
The Lyon Share Contribution Fund	Patricia J. Myhal Pancreatic Cancer Research Fund	Sara Ferlito Fund	
MacFeeters Hamilton Centre for Neuro-Oncology Research Fund	Patrick Avison Memorial Fund	Schwartz-Reisman Centre - Liver Cancer Fund	
Marie Thompson Fund	Patrick Clifford Hodgson Small Bowel Cancer Research Fund	Serous Cancer Fund	
Marilyn Green Melanoma Research Fund	Patrick Hodgson Family Research Fund		
Marilyn Ricci Cancer Pain Control Fund	Patrick Moore Leukemia Research Fund		
Marty Kelman and Gilda Tanz Fund			

Endowed Funds List

April 1, 2020 to March 31, 2021

Abraham, Ethel and Jackie Richmond Research Fund
 Adele E.G. Curry Research Fund
 Al Hertz Family Foundation Fund
 Albert Edward Rostern Mesothelioma Research Fund
 Asaro Family Lymphoma Fellowship Fund
 Ask Ethel Fund
 Barbara Sharpless Breast Cancer Research Fund
 Barrick Gold Corporation Prostate Research Fund
 Bartley Bull Clinical Research Fund
 Beatty Biological Research Fund
 Bierstock Family Lectureship in Prostate Cancer
 BRAS Drug Development Program
 The Brian Steck Leukemia Research Fund
 Bulhoses Head and Neck Fund
 C. Victor Secrett Research Fund
 Carley Allison Head and Neck Surgery Lecture Fund
 Carolyn Budovitch Brain Tumour Research Endowment Fund
 Catherine M. Wanless Research Fund
 Charles Krowitz Endowment Fund for Burkitt's Lymphoma Research
 Charles Roy Carson Research Fund
 Children's Services Fund
 Cohen and Morrison Pathology Research Fund
 Dalia McKiee Endowment Fund
 Deirdre Clement Research Fund
 Dong Luong Huynh Research Fund
 Donna Steinberg Lung Cancer Research Fund
 Dorothy Gordon Buck Endowment Fund
 Douglas Bryce Education and Research Fund
 Dr. Jane Poulson Breast Cancer Research Fund
 Dr. Joseph Neil Monteith Dunsmore Fund
 E.A. McCulloch Lectureship Fund
 Eckler Research Endowment Fund
 Edie and Eric Yolles Research Fund
 Edith Kirchmann Fellowship Fund
 Edward E. Wise Research Fund
 Edward Futerman Leukemia Research Fund
 Eleanor and Burnett Thall Research Fund

Elizabeth Duke Research Fund
 Elizabeth M. Francis Fund
 Elma Pearl Pinder Research Fund
 Enid Hildebrand Cancer Research Fund
 Ernest A. and Evelyn C. Byworth Trust for Research Fund
 Fielding Family Research Fund
 Florence Winberg Endowment Fund
 Freda Ariella Muscovitch Ovarian Cancer Research Fund
 Fritz Spiess Research Award Fund
 Gail Eisen Pancreatic Cancer Research Fund
 George and Kathleen Vice Research Fund
 George Knudson Memorial Fellowship Fund
 Gerald and Sheila Hatch Fellowship Fund
 The Gerald Kirsh Humanitarian Award Fund
 Gerry and Nancy Pencer Brain Tumor Centre Endowment Fund
 Gibson Clinical Research Fund
 Girling/MacLellan Research Fund
 Gladys M. Davis Patient Services Fund
 Glenn and Marilyn Hunnings Fund in Haemopoiesis/Lymphopoiesis Research
 Guthrie Family Fund
 Gwendolyn H. Riding Research Fund
 Harley Ulster and Cindy Leder Multiple Myeloma Fund
 Harold E. Johns Research Prize Fund
 Harold E. Yeo Research Fund
 Harry and Eleanor O'Neill Research Fund
 The Harry and Joyce Gibbard Cancer Research Fund
 Helen M. Cooke Professorship Fund
 Helen V. Crawford Research Fund
 Helena Lam Fellowship in Cancer Research Fund
 The Hibiscus Fund for Hope
 Honourable Willard Z. Estey Fund
 Hubert B. Sceats Research Fund
 Jane and Peter Eby Fund
 Jean E. McCulloch Research Fund
 Jean E. Smith Research Fund
 Jeremy A. Oliver Palliative Care Endowment Fund
 Joanna Lai Fund
 John and Esther Loewen Family Fund
 John L. Hickey Endowment Fund

John Purkis Fund for Lung Cancer Research
 Joseph Lorne Garvin Research Fund
 Joseph Robert Russell Research Fund
 Junior League of Toronto Pediatric Radiation Fund
 Katharine S. McLeod Research Fund
 Khurshed Sanjana Multiple Myeloma Research Fund
 Lee K. and Margaret Lau Breast Cancer Research Fund
 Leslie Zeev Mozes Fund
 Lyndsay, Joey and Sam Lyons Fund
 Lynn King Palliative Care Fund
 M. Ann MacMillan Research Fund
 Margaret Mary Vivian Endowment Fund
 Margaret Pollard Research Fund
 Marion H. McRobert Research Fund
 The Mary and Garth MacGirr Cancer Research Fund
 Mary C. Conway Research Fund
 Mary Pawlyk Fund for Research into Lung Cancer
 The Mary Susan MacDonald Stomach Cancer Research Fund (Endowed)
 Max Tanenbaum Music Program Fund
 McDowell-Silcox Family Research Fund
 Melissa Ann Katzman Cancer Research Fund
 Michael Kamin Hart Adolescent and Young Adult Program Fund
 Michael V. and Wanda Plachta Fellowship Fund
 Mildred Eady Research Fund
 Mildred Goldberg Fellowship Fund
 Mindy Kirsh Bridge to the Cure Endowment Fund
 Monica Wright Roberts National Breast Cancer Endowment Fund
 Morris and Marcia Kwinter Fund
 Morrissey-Copping Palliative Care Endowment Fund
 N. B. Keevil Fellowship in Translational Research Fund
 Nizar and Gulzar Kanji Fund
 Norman Latowsky Leukemia Fund
 Oberlander Fellowship in Lung Cancer Research
 Pak Heng Chu Research Fund
 Paola Colozza Fund for Drug Discovery
 Pearl Banks Family Endowment in Melanoma Research and Patient Care Fund

Pencer Centre Patient and Family Advisory Committee Fund
 Philip and Terry Browman Ovarian Cancer Research Fund
 Philip Lavorgna Life Over Lymphoma Endowment Fund
 Philip Torno Cancer Research Endowment Fund
 Philippa Harris Annual Lecture Fund
 Phyllis Hantho Breast Cancer Fund
 Phyllis Smith Nursing Education Fund
 The Rabbi Joseph and Doris Kanner Fund
 Reid-Weston Family Leukemia Research Fund
 Richard H. Grimm Lectureship in Head & Neck Oncology Fund
 Robert Visagie Bone Marrow Transplant Fund
 Roy Arthur Fawcett Cancer Research Fund
 Ryder MacDougall Family Fund
 Shawn's Miracle Fund
 Shiraz Bagli Memorial Fund for Basic Research in Ovarian Cancer
 Shirley Mak Breast Cancer Research Fund
 Spooner Family Endowment Fund
 Steven Hoffman Fellowship in Molecular Genomics Fund
 Stevens/Peters/Bush/Fellowship in Radiation Medicine Fund
 Susan E. Crerar Ovarian Cancer Early Detection Fund
 Sylvia and Louis Lockshin Patient Education Program Fund
 Sylvia Jaychuk Pancreatic Cancer Research Fund
 TD Fund for Medical Discovery
 Teddy Orenstein Research Fund
 Tehmi Boman Shroff Fund in Multiple Myeloma Research
 Terry Watson Research Fund
 Tony Pennella Fund
 Val Trypuc Sarcoma Research Fund
 Valerie Dickson Fund
 Vera McDermott Patient Education Fund
 W.J. Collins and J.A. McNab Research Fund
 Walter B. Pape Fund
 Wharton Lectureship in Head and Neck Cancer Fund
 William and Dorothy Drevnig and Family Ovarian Cancer Research Fund

To learn how you can help
conquer cancer visit thepmcf.ca

The Princess Margaret
Cancer Foundation  **UHN**

Office/Courier Address:

700 University Avenue,
4th Floor, Toronto, ON M5G 1Z5
T: 416.946.6560 / 1.866.224.6560
F: 416.946.6563

Mailing Address:

610 University Avenue,
Toronto, ON M5G 2M9

Follow or Like us

on social media:     

Charitable Organization No. 88900 7597 RR0001