

THE PRINCESS MARGARET

## Estates and Gift Planning

# BUILDING YOUR LEGACY



## What Will Be Your Legacy?

Imagine contributing to a brighter world for future generations and inspiring your loved ones to do the same. You might wish you could do more to support breakthrough cancer research, but you might also be concerned about making a commitment that will affect your financial security – or that of your loved ones.

Fortunately, legacy giving offers many ways to make a meaningful difference for future generations of cancer patients, while offering the flexibility that you need.

## Benefits to You

### **Increase your impact.**

It's possible to make a more significant impact through your Will than you might have thought possible during your lifetime.

### **Tax benefits.**

Charitable gifts in your Will can help offset tax on your estate, potentially allowing you to leave more for your loved ones.

### **No immediate commitment.**

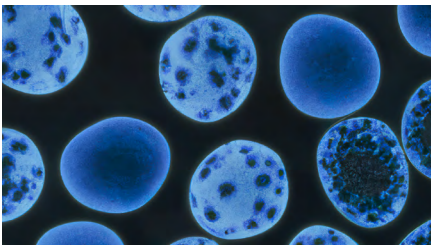
There's no cost now, and you can update your Will or change your mind at any time.

### **Keep fueling breakthroughs in a cause that matters to you.**

You can make a lasting impact, while also providing for your loved ones.

## If Cancer is Your Cause...

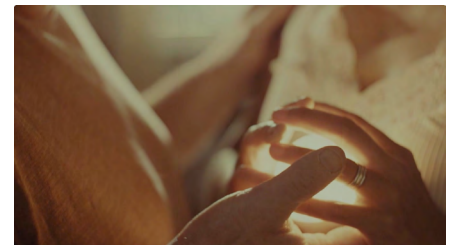
A gift in your Will to The Princess Margaret directly supports our top priorities in cancer care, research and treatment, including:



Funding high-priority research initiatives for over 200 types of cancer, including some of the most difficult to treat.



Enhancing our clinical spaces to ensure they continue to support the delivery of world-class care in state-of-the-art environments.



Supporting comprehensive care programs that extend wellness beyond physical care, incorporating emotional and mental health care for patients and their loved ones.

## Sample Language for Your Will

If you wish to include a gift in your Will to The Princess Margaret, please use the sample language below:

"I give to The Princess Margaret Cancer Foundation, 610 University Avenue, Toronto, Ontario, Charitable Registration number 88900 7597 RR0001, the [sum amount, percentage, etc.] to be used to support the Foundation and its mission for the benefit of Princess Margaret Cancer Centre."

If you wish to designate your gift for a specific purpose, we suggest adding a "Power to Vary" clause to honour your wishes. For example:

"If at the time of my death it is impossible, impractical or inadvisable to apply the gift to this purpose, the Foundation may at their discretion direct the gift to a similar purpose."

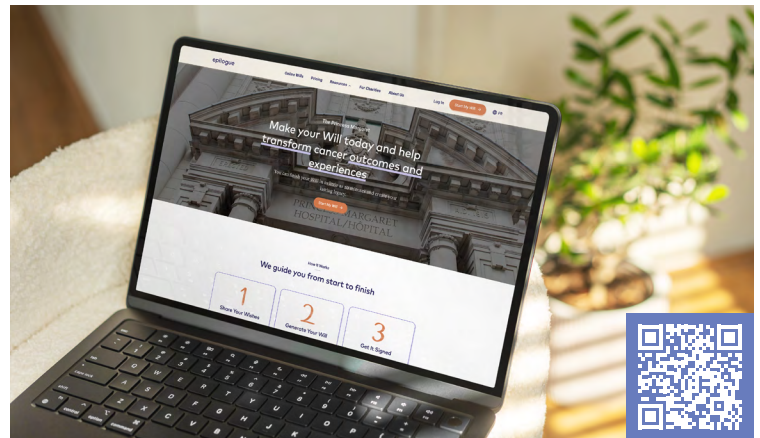
Whichever you choose, your gift will have a lasting impact on the lives of cancer patients everywhere.

## Online Will

The Princess Margaret Cancer Foundation has partnered with Epilogue, a Canadian-owned online Will-writing platform, making the process simple and affordable.

Planning for the future is an important way to ensure your wishes are honored and your loved ones are cared for.

Visit [Epilogue](#) or scan the QR code to receive 20% off the cost of creating your Will.



## We're Here to Help

Thank you for considering building your legacy with The Princess Margaret. If there is anything we can do to assist you, please don't hesitate to get in touch.



### Genane Peniak

Associate Director, Estates and Gift Planning  
416-660-1276  
[genane.peniak@thepmcf.ca](mailto:genane.peniak@thepmcf.ca)

